



HOTEL SOLUTIONS





Welcome to a comfortable and efficient hospitality world.

Stylish design and fully interaction with guests.

Systems designed to offer guests the very best in comfort and safety, as well as aesthetic coordination of all the installed devices, energy efficiency and total control of the hotel.

Design meets technology.

We evolve alongside the architectural and living styles to best-fit with your projects.

Good-looking and well-made are the words that best describe our vision of Italian manufacturing, which - for us - means creativity, expertise, innovation, tradition, attention and the utmost dedication. We believe that form and technology must go hand in hand, "Made in Italy" means more than beauty.



Bespoke quality, unique in its versatility

A limitless choice of standards, modules and installation types. We are a close partner that assesses together the exclusive possibility of finishes and countless function combinations.



We are an Historic Brand of National Interest by the Ministry of Economic Development.



Ambassador of Made in Italy since 1945

The company's home, where we create, design and manufacture our products, is still located in Italy. Vimar stands out for a blend of style and technology that speaks Italian the world over. A combination of aesthetic quality and technological reliability unique in the world.



Iconic designs

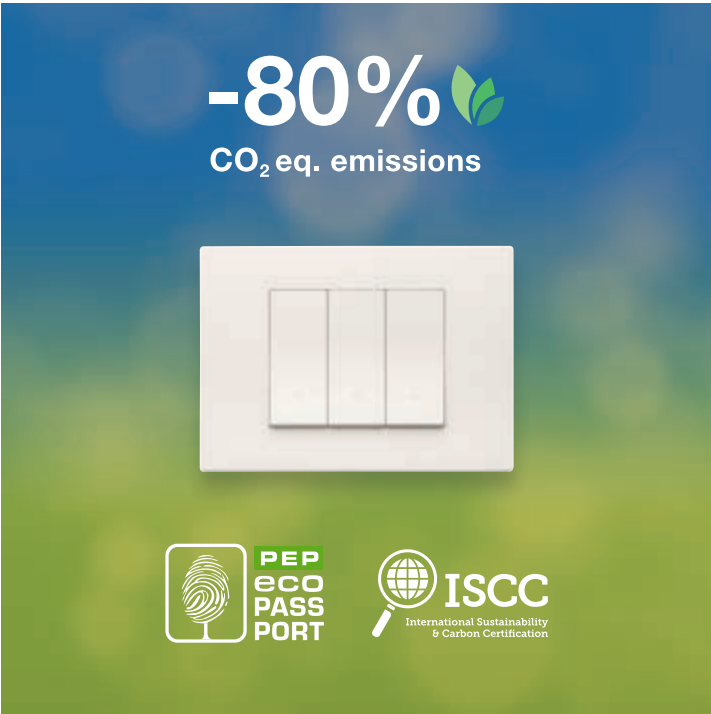
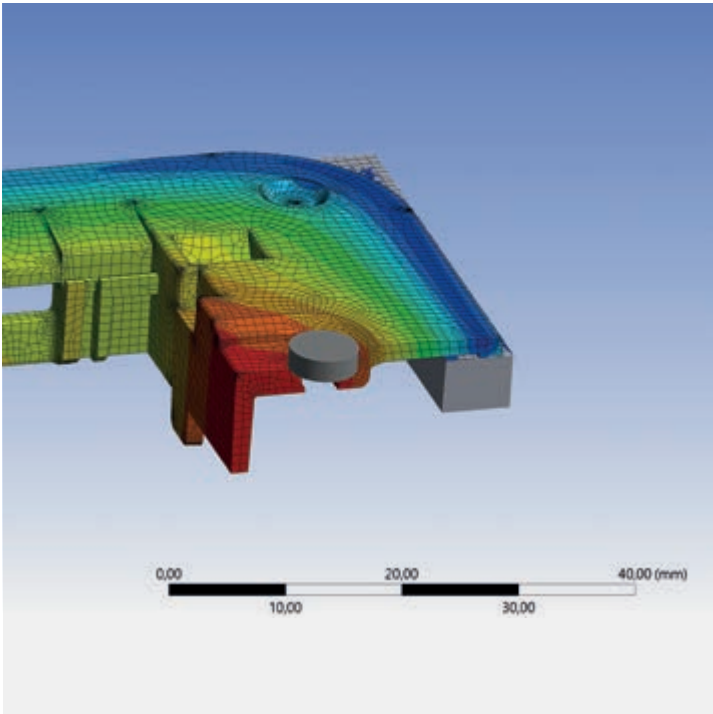
We work closely with most renowned designers to ensure that we evolve in line with changing architectural styles. This approach is the starting point for our iconic design proposals, consisting of harmonious geometric forms and finishes carefully conceived to enhance the look of every setting.

Advanced technology for a low environmental impact.

Sustainability, our commitment for the future.

Environmental awareness and climate change are concerns, that above all, will effect future generations. This is why we have adopted a circular economy model that guides our design thinking and processes. We have chosen positive energy.

We design to be integrated with other players. Products and green building rating systems: we create products that can contribute to the score of the most popular building sustainability protocols, such as LEED®, BREEAM®, WELL®.



Focus on territory and the environment

Our new logistics and production pole is an exemplary project to contribute to environmental sustainability. For the supervision and analysis of energy consumption levels in our plants, we have adopted the logic of smart metering. These example of the design choices show sustainability, architectural value and occupational comfort expressed to the full.

>1.7 GWh/per year
energy produced by the photovoltaic system.

-1,115 tCO₂
emissions avoided in the last three years

Products evaluated from LCA perspective

We assess the environmental performance of Vimar high-rotation products according to the **Life Cycle Assessment (LCA) approach**, according to the international reference standards ISO 14040 and 14044. The process is part of the Environmental Product Declaration (EPD) and it is based on LCA analysis to determine resource consumption and the impacts that each phase of the product's life cycle has on the environment.

Linea, unique also in sustainability

Linea replaces **traditional fossil-based plastics with renewable and recycled plastics** (certified ISCC PLUS) and also through the optimization of production processes, **it reduces by over 80% in equivalent CO₂ emissions for a saving of over 500 tonnes of equivalent CO₂ per year.**

97%
of Linea production contains plastics from recycled sources originating from a certified ISCC PLUS apply chain.

Recycled and recyclable raw materials

The metallic components make up 80% of post-consumer recycled material. For plastic components, we use semi-finished products with a percentage of raw materials from internal recycling or semi-finished products with raw materials originating in full or in part from recycling.

94%
the share of waste sent for recovery or recycling

Practical advantage in response to specific needs.

Our solutions benefit the entire business chain.

Our primary goal is to establish a solid partnership with our clients, building a lasting relationship that delivers practical and clear advantages. From the hotel operator/owner, with guaranteed high operating yields and energy efficiency, to the installer, whose work is made easier, and the guests, who will appreciate the comfort and safety in every little detail that make the difference between an ordinary stay and an outstanding hospitality experience.



A single solution provider

When you choose us, you are choosing to work with a team of professionals who can provide expert support and customized global solutions for automating, connecting and monitoring the entire hotel, while assuring total aesthetic coordination of all visible devices.

Comprehensive package and bespoke projects

With a range of over 12,000 products - including wiring devices, home and building automation systems, video door entry systems, video surveillance systems - we have indoor and outdoor equipment to cover every need, offering technological reliability, ease of installation and extreme simplicity of use.

Support

Our website offers everything you need to evaluate our proposals. Specific documentation, technical information, installation data, online design and quotation services, plus a practical configurator that lets you combine decorative plates and switches to betested on different kinds of walls.

Internationality

Italian by origin, international by choice. We have a global presence with nine subsidiaries and a network of distributors in key locations to serve over 100 countries worldwide.

Modular and scalable solutions.

Non-integrated or Integrated systems.

From stand-alone solutions, non-integrated but wireless solutions, to integrated guestroom solutions, such as property management systems (PMS), building management systems (BMS) or door lock management systems. Choose the ideal combination of light, shade and temperature control solutions, we help you enhance guest comfort, improve staff efficiency and save energy through the property.



Guestroom management systems in a sustainable vision

We offer two types of solutions: non-integrated solutions, from standalone control to integrated guestroom management systems, and integrated control systems to achieve centralized control of lights, shades, and temperature for every other space in your hotel.



Matching styles for any international projects

Each accommodation facility has its own architectural identity that should also be reflected in its electrical and electronic devices. We offer a vast range of cover plates to frame our control devices: wide variety of materials, colours, shapes and finishes.



Access control and hotel room management

Designed to be functional, easy to use, they facilitate management and guarantee safety throughout the premises, from common areas to guest rooms, as well as wellness areas and outdoor spaces to guarantee the utmost energy efficiency.



Fully integration with other systems of the hotel management

To create innovative and intuitive solutions for energy control management, thus reducing energy costs.



HALL

A fully-featured control centre



COMMON AREAS

Safety and security in all areas



GUEST ROOMS

Comfort and design travel together



WELLNESS AREA

Specific solutions for special spaces



Comfortable and energy efficiency solutions.

Dedicated to meeting the specific needs of each area.

Our offering consists of transverse solutions designed to meet the needs of each area of the hotel. Made to be functional, easy to use and fully flexible, they facilitate management and guarantee safety and security throughout the premises, from common areas and guest rooms to wellness areas and outdoor spaces. All solutions are designed to guarantee the utmost energy efficiency.

Hall.

A fully-featured control centre.

Halls are the first contact of your hotel with your guests: thanks to flexible setup you can create automated, preset scenes for different occasions or times of day. Easily adjust or add scenes as the space changes, or for a special event.

The reception desk becomes the facility's operations hub, for coordinating the functions of common areas, managing the status of guest rooms, controlling access points and monitoring the building. Enhance the guest experience and improve the staff productivity.



Eikon Exé - White Calacatta



Eikon Exé - White Calacatta



The entire facility in a single click

Thanks to the Well-contact suite software, the entire facility can be controlled via computer. Five versions, differentiated in accordance with type and size of facility, to manage and control all devices in the Well-contact Plus system.



Total comfort, total control.

Dim and turn on/off lights, raise or lower blinds, allow door entrance: all with instant, one-touch control and status display, the system can be integrated with other connected devices in the room to allow the doors to be opened remotely, to control the automations in the room and to check the presence.



Everything at your fingertips

Lights, temperature, power, entrances and exits: everything can be managed directly from a computer or even a “user-friendly” touch screen device. The reception desk becomes the hotel's operations hub, for coordinating common areas, managing guest rooms, controlling access points and monitoring the building.

Common areas.

Safety and security in every corner.

In corridors, stairwells or other common areas of the hotel, our integrated system guarantees total comfort and efficiency to exceed energy goals in total safety and security. Always. Lights that turn on only when someone passes, motorized curtains and shades go up and down at fixed timing, HVAC equipment under control, emergency lighting provide appropriate light during blackouts, LED step marker lamps that indicate escape routes, cameras that monitor guests and ensure no unauthorised persons enter their room.



Linea - Silver



Linea - Silver



All under control

Video cameras with builtin microphone discreetly monitor common areas, constantly capturing everything that happens inside and outside the facility and even providing an audio feed.

Power everything and everywhere

Universal sockets and USB power socket outlets for guests to charge their own devices.

Smart detection

Sensors strategically positioned in common areas prevent energy wastage by turning the lights on only when someone approaches, forming a path of lights that illuminate in sequence.

Total control

Various switches enables guests to control different scenarios (for example: day and night scenarios) and also to operate the television, indicate “Do not disturb” and housekeeping requests outside the door. All this making the guest’s stay more pleasant.

Guest room.

Comfort and design travel together.

Whether connected to our Integrated system or creating a Non-integrated solution, Vimar guest rooms stand out for their attention to the smallest technological and design details and absolute comfort. Nothing is left to chance: all variables are managed and the various functions coordinate with each other to adapt to occupants' needs and lifestyles.



Eikon Evo - Total Look Black Diamond





Multiple devices all in one place

Centralized switches for managing multiple bathroom devices from a single location.

Welcome to the guest room

Various switches enables guests to control lights and indicate housekeeping requests outside the door.

Multimedia and connectivity

Power socket outlets for guests to charge their own devices put multimedia entertainment and connectivity within easy reach. Guests can easily charge portable devices using the integrated charging USB sockets.

Customized climate control and room status

The temperature settings for the bedroom and bathroom can always be modified individually with a simple touch. And the room status can be displayed intuitively in the corridor outside.

Solution for temperature control.

A responsible solution.

An intelligent choice for comfort while keeping energy consumption levels in check. Stylish thermostats, integrated in our product ecosystem; surface mounting and flush mounting thermostats; stand alone solutions or connected in radio frequency or via Bus. Perfect coordination, multiple choices. Well-being for your guests to create a friendly environment.



Eikon tactil touch thermostat

The exclusive element that enhances your comfort levels: precious and easy to use. Available in black or white. Fitted with intuitive controls and a large touch display with RGB backlighting to encourage maximum readability, it blends in perfectly with home automation systems featuring By-me Plus and KNX technology.



Stand alone and connected rotary dial thermostat

Fitted with four quick buttons on either side: on/off, hot/cold mode selection (for the scenario activation home automation system version), LED brightness selection, temperature measurement unit selection (°C or °F), a LED matrix display designed to be perfectly comprehensible even a few metres away and a rotary ring that can even be adjusted with a finger.



Linea XT platform thermostat

Modular and scalable to adapt to any need: XT platform devices can be scaled over time with extreme simplicity, from the simple control of lights to the management of room temperatures and multisensors as humidity control.

Bed head area solutions.



Symmetrical bed heads

Simply stretch out an arm while lying comfortably in bed to control the lights, plug in a device or recharge your smartphone using C-type USB socket.



Hi-tech and Vintage

Simply insert your bedside lamp or device into the socket. Utilize the Vintage style switch to easily turn it off, providing you with peace of mind when you leave your room.



Easy control. Touch design

Turn on/off lights, raise or lower blinds. All with instant, one-touch Flat controls.



Bedside control

Easy to reach bedside switches and sockets to control the lights, plug in your devices or recharge your smartphone using C-type USB socket.

Bathroom area.



No limits

Thanks to the innovative EnOcean, Bluetooth and ZigBee radio frequency technologies, wireless and battery-free lighting controls can be easily installed anywhere and on any surface, without the need for masonry work.



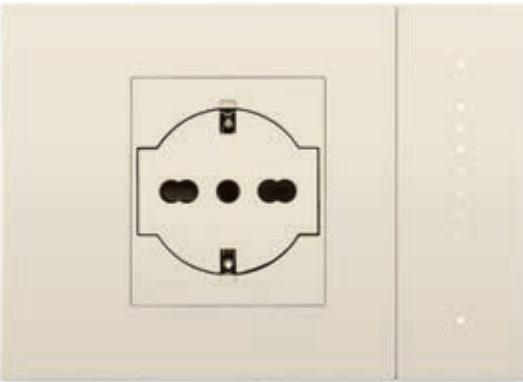
We provide solutions for the whole world

Our special sockets with built-in transformer automatically switches to the desired voltage for connecting any type of electric shavers.



Music at your fingertips

Easily connect your devices and control your music with our range of controls, based on KNX standards.



Universal flush-fitting socket outlets

Flush-fitting socket outlets with a patented recessed anti-jamming mechanism which guarantees functionality at every use, together with a dynamic LED matrix of Linea with XT platform dimmer control.

Wellness area.

Specific solutions for special spaces.

An oasis of wellbeing to restore body and mind. For wellness areas with restricted entry, or provided as a paid service by an external provider, we install devices that offer maximum comfort and transponder card readers for controlled access, with service fees charged straight to the card holder's account.



Eikon Exé with Tondo Controls
Satin Gold



Eikon Exé with Tondo Controls
Satin Gold



Light automation and intensity

Passive infrared motion detector for detection of occupants in the room for lighting automation with additional dimmer for adjusting the brightness to create the right atmosphere.



Reserved access

The transponder reader and card only allow authorised persons to access restricted zones, while the Well-contact Plus system and associated management software enable paid services to be charged directly to the guest's final bill.



Lighting effects

Vary the brightness of light sources and regulate the color or white color temperature of RGB lamps to create elegant and sophisticated effects that enhance the wellness experience with chromotherapy.

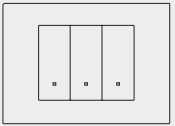


Background music

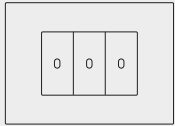
High-quality sound system with speakers that play music from up to 4 different sources in individual zones.



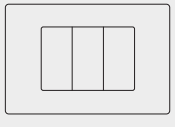
EIKON



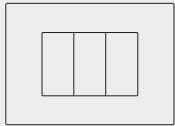
LINEA



ARKÉ



PLANA



NEVE UP



Lifestyle wiring devices.

Even wiring accessories can be cool and stylish.

Each hotel has its own distinct architectural identity that should be reflected even in its electrical and electronic devices. That is why we offer a vast range of cover plates to frame our control devices. Available in a wide variety of materials, colours, shapes and finishes, they are devised to suit any interior and meet the most specific design needs, offering complete aesthetic coordination.



Eikon Exé



Vintage Flat Tondo

Eikon Exé

Material and form, prestige and sophistication: impeccable looks and advanced features combine to produce simply extraordinary results.



Eikon Evo



Eikon Tactil

Eikon Evo / Eikon Tactil

Elegant geometries and chromed frame; perfect aesthetic coordination with Eikon Tactil, a technological jewel with high-tech appeal.



Linea



Linea with XT platform

Linea

Unique line, which combine essential design with the most advanced technology: innovation meets tradition. Linea is also digital with the innovative XT platform, a technological experience for building automation.



Arké



Arké Black Arké Metal

Arké

Contemporary style. Large sized surfaces that underline shapes and materials. Convex buttons, a pleasant feeling ergonomic shape with materials selected to last.



Plana



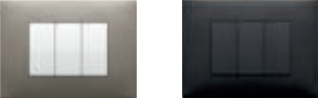
Plana Reflex Sapphire Plana Silver

Plana

Universal and linear design, simple lines and endless colour combinations.



Neve Up



Neve Up Matt Dove Grey Neve Up Matt Carbon

Neve Up

Modern shape for affordable quality with Italian design. Versatile and modular range, ideal for renovations, upgrades and new buildings. It's also smart.

Eikon. Two identities.

Elegance, excellence, value.

Purity, elegance and classic taste meet advanced technology, cutting-edge features and refinement. These characteristics describe the two souls that make up the Eikon range, with different designs and finishes, all sharing a common feature: excellent energy management.



Eikon Evo
Sophisticated
geometric shapes

Eikon Tactil
High-tech appeal



Eikon Exé
Material and form

Vintage
Modern retro essence

Flat
Simple yet striking
minimalism

Tondo
Elegant and discreet

Eikon Exé.



Eikon Exé

The essence of shapes and materials. Squared corners and striking silhouettes give rise to a range that blends in seamlessly with any environment. Resulting from a meticulous selection process, different top quality finishes, which create a different, original soul each time: glass, leather, mirror, wood, marbled stoneware, brushed, shiny and exclusive metals.



Vintage

Vintage toggle switches embrace mesmerising lines of the past restyling them with a modern twist providing an exclusive, slightly retro style. Cover plates can be customized with a precise logo and controls,can be elegantly lasered with pictograms to identify all diverse functions.

Eikon Exé.



Flat

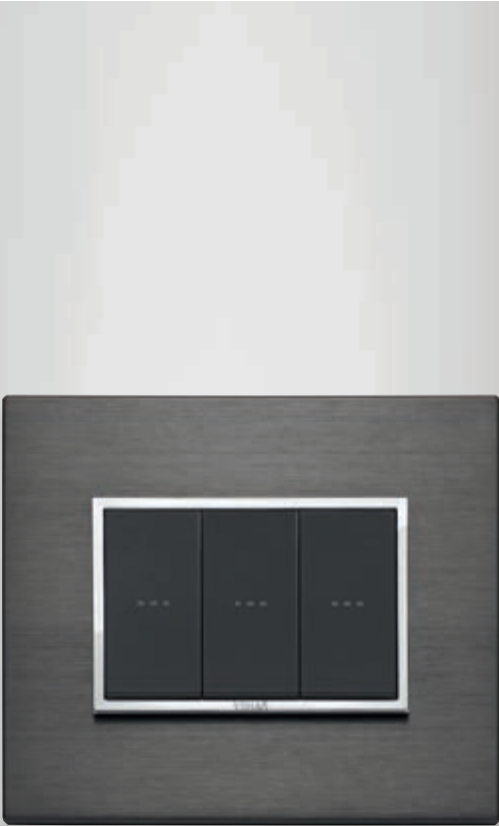
Planar and square-shaped controls create a pleasant flush-mounting effect, to emphasise the textured appeal of the cover plate. Provided with personalized RGB backlighting, controls can be elegantly laser-engraved with icons and pictograms.



Tondo

The base of the control is backlit, creating a very elegant and discreet halo between the button and the plate. The buttons are different depending on whether a traditional or home automation wiring system is used, in order to have an optimized look depending on the device.

Eikon Evo / Eikon Tactil.



Eikon Evo

Elegant geometries and chromed frame, the design of Eikon capture the latest interior design trends and bring out the best Italian style. Perfect aesthetic coordination with Eikon Tactil.



Eikon Tactil

A technological jewel. The cover plates are available in various finishes including crystal, solid wood, natural leather, carved stone and Corian®. Colour functions can be customized thanks to RGB LED backlighting for home automation systems.



Linea.

Essential design and thin planarity.

Linea combines the essentiality of a refined aesthetic with the most advanced technology: innovation meets tradition also thanks to numerous registered patents. Intuitive thanks to the increased width of the controls. Connected, thanks to the smart and home automation versions. Understated and contemporary design and the pursuit of natural appeal have been interpreted by the neutral colour shades, which are growing in popularity in modern hospitality interiors, creating welcoming atmospheres and easily accommodating various styles.



Aligned control

Axial control

Home automation control

-80%
CO₂ eq. emissions

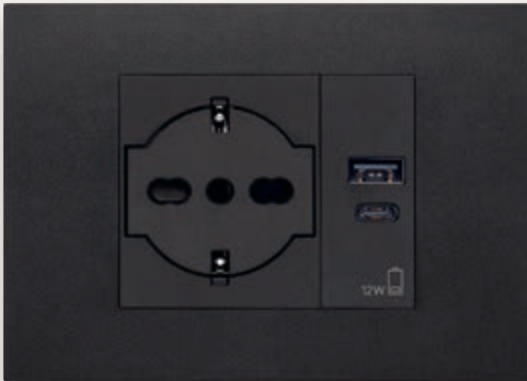
Linea replaces traditional fossil-based plastics with renewable and recycled plastics and also through the optimization of production processes, the efficient management of product volumes, and the use of FSC-certified eco-friendly packaging, it reduces by over 80% in equivalent CO₂ emissions for a saving of over 500 tonnes of equivalent CO₂ per year.

Furthermore, 97% of Linea's production incorporates plastics from renewable and recycled sources from an ISCC PLUS-certified supply chain (mass balance), contributing significantly to reducing environmental impact.



Distinctive effect on the wall

Aligned control with a patented vertical light beam creates a soft glow on the surface of the cover plate, the result is a discrete yet distinctive effect.



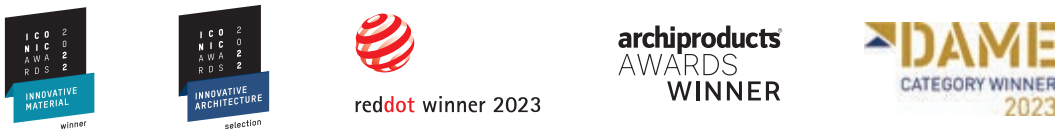
Perfect results in any interior design project

Attention to detail, impeccable finish and state-of-the-art technology. Understated, flat design from the lighting device to the socket outlet, which thus feature perfectly matching styling to blend in seamlessly with any setting.

Linea with XT platform.

Experience Technology.

Linea is also digital with the innovative XT platform, a technological experience for building automation. Absolute flatness of the controls. Modular and scalable to adapt to any hotel need. The devices can be scaled over time with extreme simplicity: from the simple control of lights and shutters, to the management of room temperatures and the activation of scenarios for an always up-to-date and functional automation system.



Dinamic LED graphic icons

Laser-crafted graphic icons

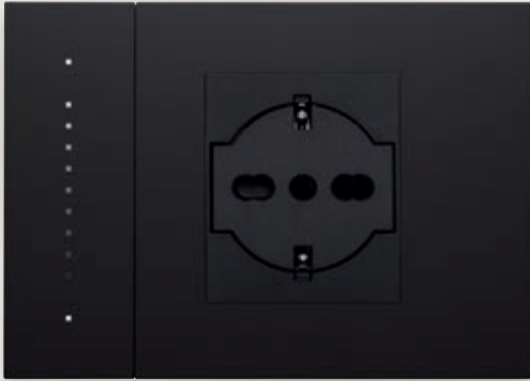
Easy scenarios to customize

Laser-engraved graphic icons contained in a comprehensive and broad library of symbols, which allow you to identify the desired function. Dynamic LED icons which can be customised using the View App. Possibility of smart backlighting with white light set to various brightness levels as you prefer.



Expandable and dynamic

Extensive scalability and expandability of controls. You can move the front to other control devices in one simple move, without having to adjust any wiring.



One unique style for all functions

Painstaking pursuit of absolute flatness between all the elements of the lighting device and between different lighting devices. Linea and XT platform perfectly match all functions, with control and socket outlet device.

Arké.

A contemporary soul with a strong personality.

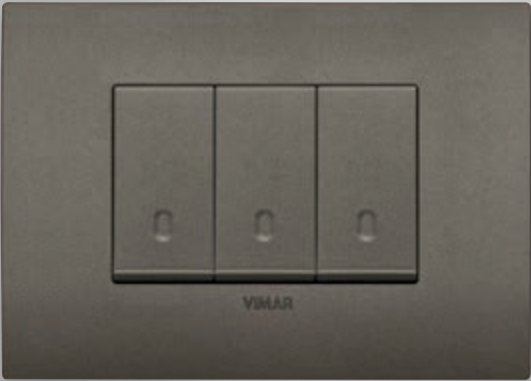
Simplicity and personality to enjoy spaces in the best of ways. Inspired by long-standing principles that endure beyond changing fashion trends. It conveys the right mix of character, expressiveness and attention to detail. Convex buttons, finishes and colours, materials made to last.



Arké Classic - White Total Look



Arké Classic - Black Total Look



Arké Classic - Metal Total Look

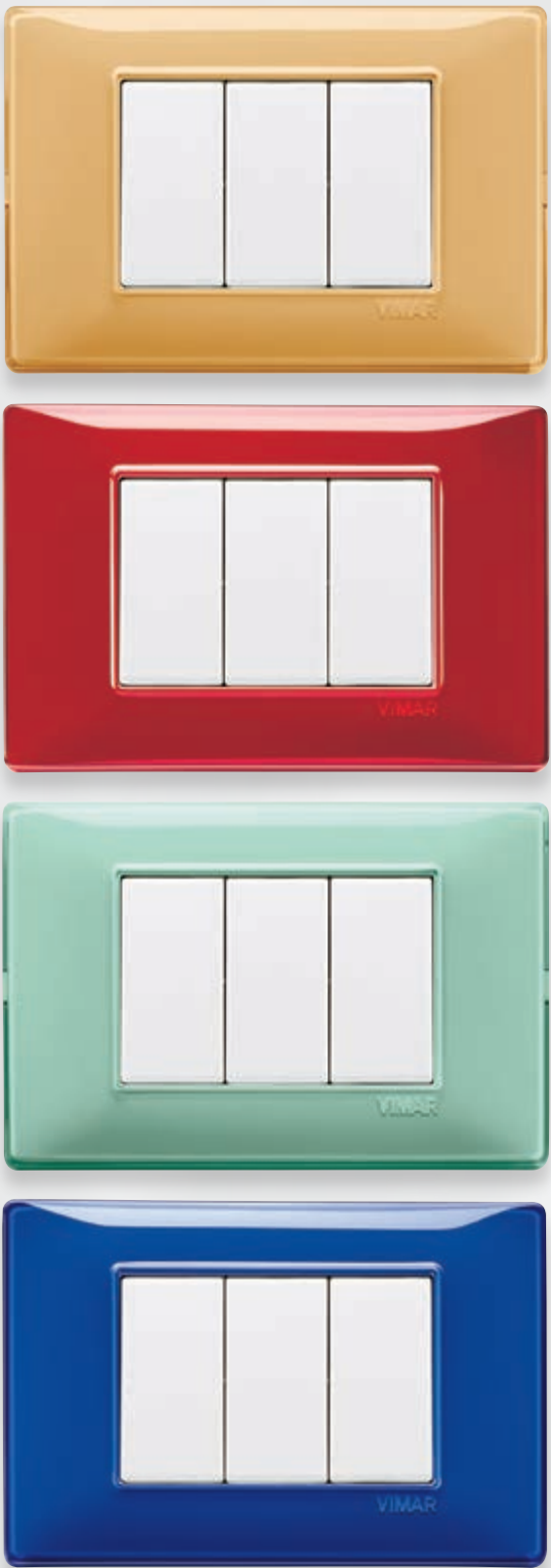
Plana.

Universal, essential and versatile whatever the combination.

Simplicity becomes a lifestyle: with soft, welcoming silhouettes, it embraces the unlimited material and colour variants with a palette that is always fresh and bright. An ever trendy style.



Plana - White



Neve Up.

Simple lines, modern shape and affordable quality with Italian design.

Recognizable design to guarantee full functionality, quality and easy installation. A comprehensive range of devices in all international standards for your hotel projects. A versatile modular system to have more opportunities to create or upgrade your best-fit electric installation.



Our products speak a universal language.

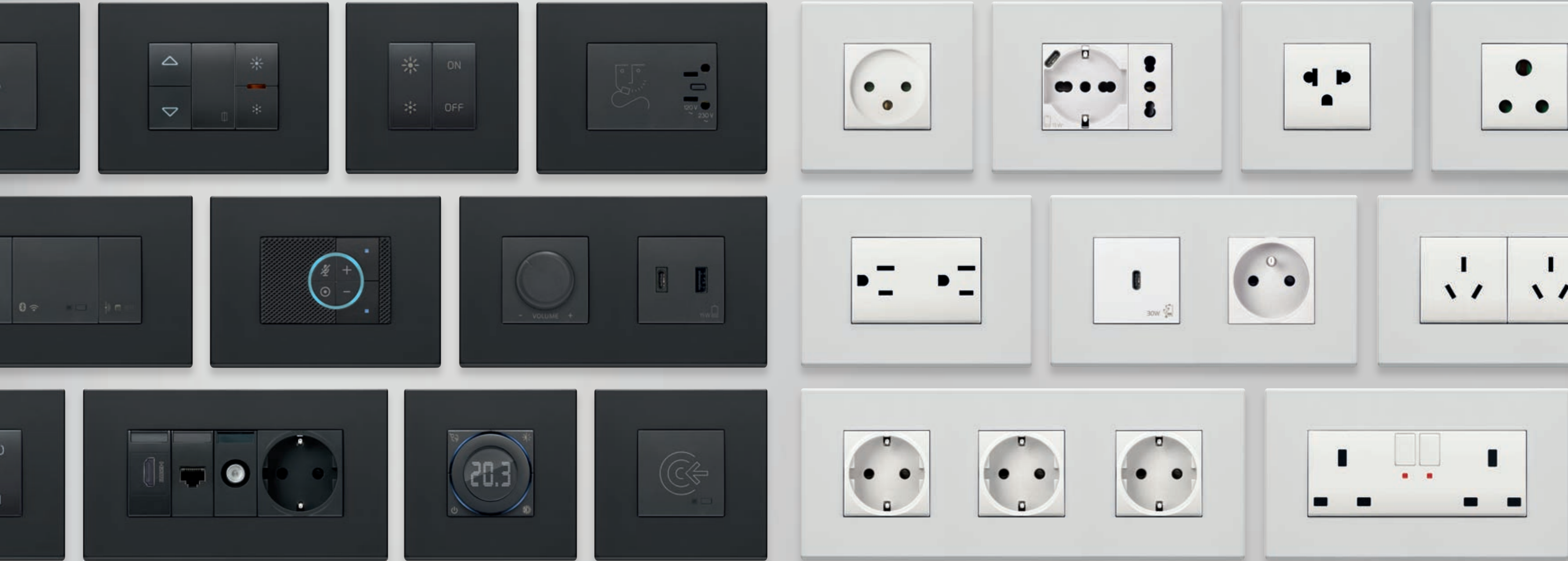
Wiring solutions compatible with more than 100 countries worldwide.

To meet different installation requirements in different countries, our range includes a wide variety of devices that comply with the most widespread international standards and are highly versatile from the modularity and installation potential point of view.



More than 200 functions.

Choose from many modular and versatile solutions with all international standards.



International standards and different modular configurations/functions

Socket outlets and switches compliant to UK, French, German and US standards, with the relevant installation back boxes for planning and controlling the electrical system in total safety and in compliance with different international specifications. Gridswitch system up to 21 modules; installable vertically or horizontally made to suit specific electrical installation requirements.



The beauty of bespoke.

Make your wiring system unique. Exclusive possibilities.

The Eikon series offers a comprehensive range of solutions to customise your system and strike the perfect balance between styling and technology. Special finishes, countless colour combinations for both cover plate and buttons, customised symbols associated with controls, and logo engraving on the cover plate.

- Customize cover and controls**
 - > Choose the colour of the cover plate
 - > Match the colour of the button

- Choose from our special finishes**
 - > Decide on your finish



- Personalize and make it yours**
 - > Engrave your logo
 - > Customise your controls

Special materials and more colours for every interior.

Infinite possibilities, exclusive opportunities.

In response to new interior design trends, Vimar offers the possibility of not only choosing premium new materials with touch technology, but also customizing wiring accessories by selecting the colour of the cover plate and internal/external frame. We even help clients to design bespoke aesthetic solutions that enrich and complement the style of their hotel.



Cover plates in over 200 colours

For some types of cover plate, it is even possible to choose the colour that best matches the style of the building. An exclusive opportunity designed to meet the latest stylistic trends and enhance the architectural design.



Uniqueness lies in attention to detail

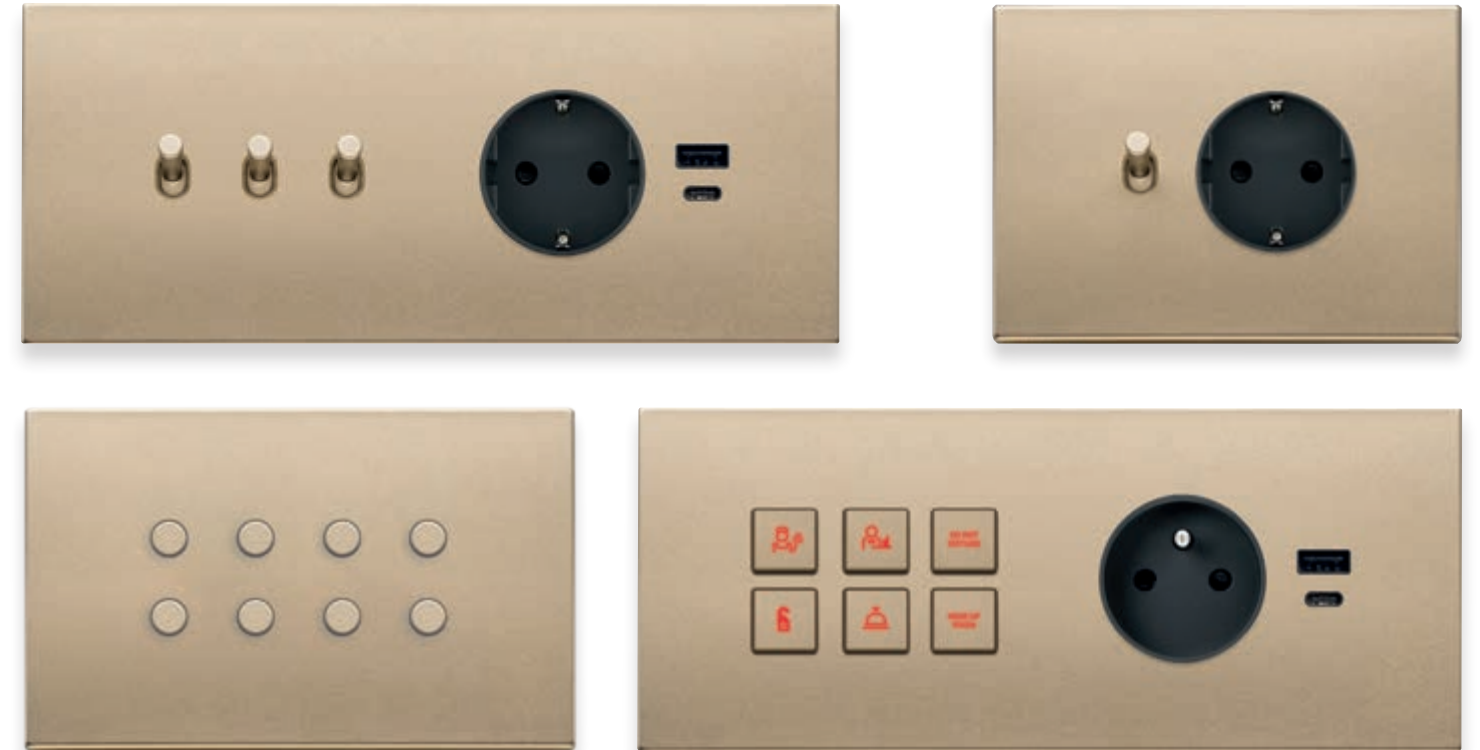
The Eikon series offers a comprehensive range of solutions to customise your system and strike the perfect balance between styling and technology. Special finishes comprising metals, leathers, glass and stoneware.



A versatile system.

Modular design to suit the needs for your international projects.

Easy to match the style to accommodate various installation requirements for home or hospitality applications. Our cover plate offering is distinguished by total versatility in terms of both modular design and installation; for example, match round sockets with the functions and style of the Eikon Exé range for a distinctive effect and simplifying everyday gestures.



From two, three and four modules, through to seven modules to optimize several devices within a single cover plate offering superior styling value. For your international projects, we offer cover plates with between 1 and 21 modules and multi-module cover plates for both vertical and horizontal installation, to design bespoke systems and manage energy in complete safety according to the different international specifications.

Enhance the value of your identity.

Highly customisable.



Added value to your identity

To enhance the identity of the accommodation facility, all cover plates can be engraved with a logo provided by the customer. Laser technology allows you to reproduce any symbol associated accurately with the command, for a long-lasting result.



Vast library of symbols to create an intuitive user experience

Buttons and controls can be customised according to the chosen function. Laser technology makes it possible to replicate any symbol accurately, choosing from an extensive gallery of pictograms that identify the most widespread functions. Thanks to RGB technology, customers can also choose the colour of the backlighting.



COMFORT



ENERGY
EFFICIENCY



SECURITY



High-performance solutions and advanced technology.

For a sustainable living.

Our electrical systems ensure smart, optimised management of the hotel, regardless of its size. From a single guest room to the entire facility, all installed devices are fully integrated with each other, ensuring maximum benefits for both guests and operators.

quid₊

 Bluetooth®

 zigbee


by-me
smart automation

 KNX®





Focus on room control systems.

Integrated system with PMS, BMS, third party access control app and workflow software.

All accommodation facilities require optimized and effective management of own services, systems that simplify daily operations and reduce management costs by optimizing energy savings and guaranteeing a high level of comfort and well-being for the customer. High-performing, safe and immediate: all our systems are fully integrated and this results in real benefits.

Centralized supervision.

Thanks to the touch devices you enable the centralised control of every rooms of the building and the applications of Well-contact Suite software allow to decide specific functions and manage all devices of the system.

Optimum climate control.

The status of the temperature can be managed and supervised from the reception. The climate is controlled using a centralised system which can be activated or deactivated depending on whether people are present and on whether or not a window is open.

Energy saving.

By means the movement and brightness detectors, lighting and temperature are always controlled, switching on/off when necessary and preventing wastes. Scenarios can be created in order to collect more functions in one action, managing all the building with a few gestures.

Security in each areas.

The security of the system is ensured by transponder card readers which only allow specific areas or environments to be accessed by authorised persons and enable the reception to control the room status.



Focus on room control solutions.

This solution allows integration with PMS, BMS, third party access control app and workflow software.

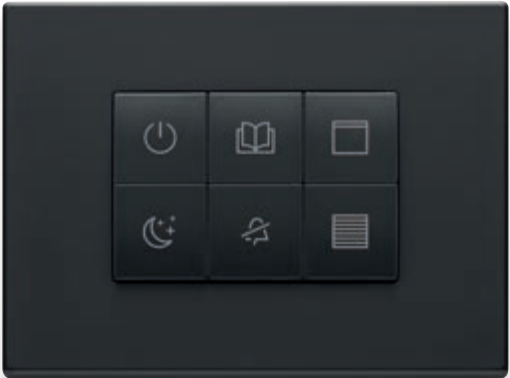
Example of configuration of an integrated system that allows centralized management of room functions that helps the reception to know of the presence of people in the room, to control the status of curtains, shutters and the temperature; thanks to transponder card readers, access to specific areas or environments is allowed only to authorized persons. A convenient centralized control that allows for a more efficient management of the structure and the people who work there.



1 Do Not Disturb / Make Up Room display and doorbell button control placed outside the room.



2 Wall control panel to control bedroom lighting, Do Not Disturb and Make Up Room

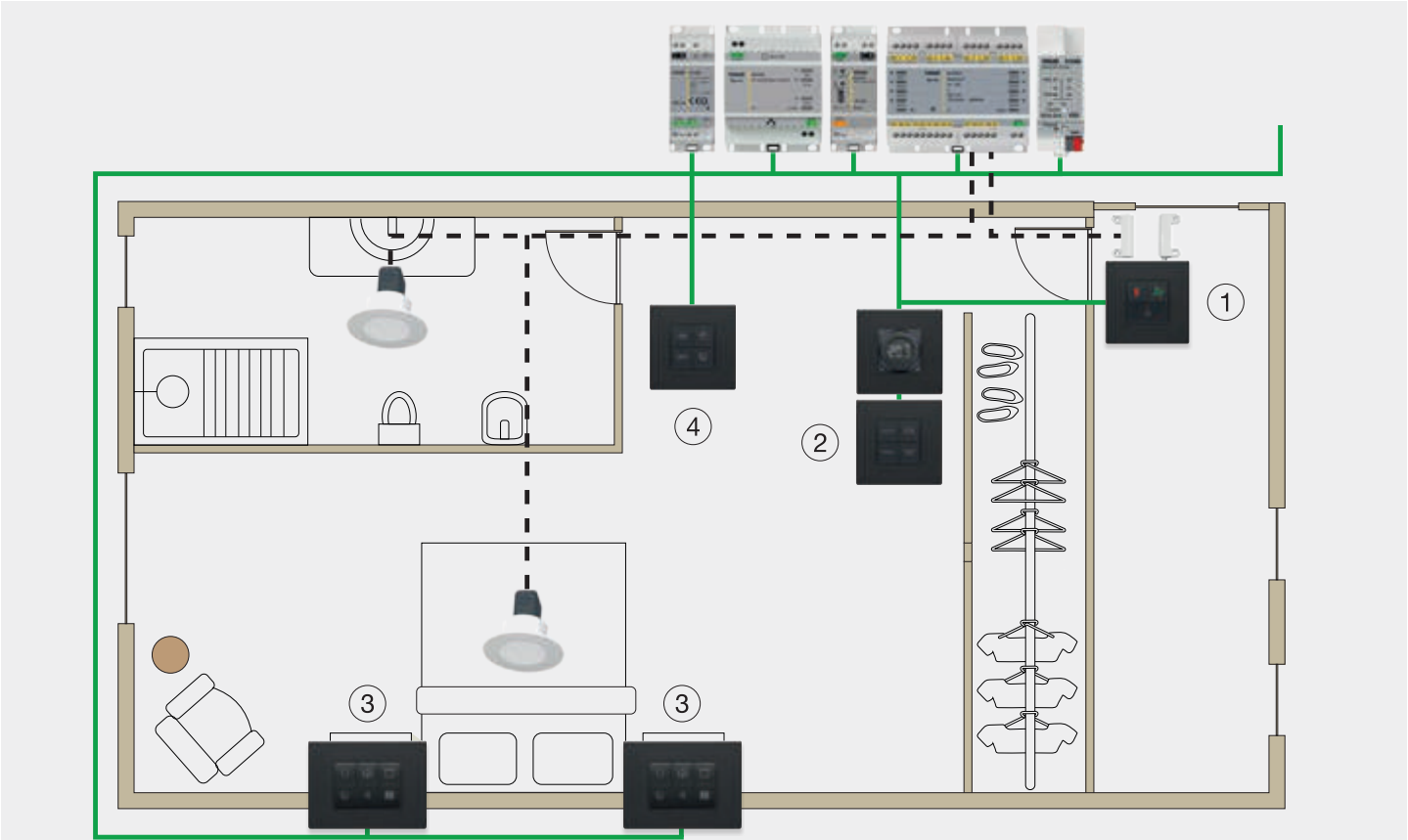


3 Wall control panel allowing scene activation with light, blinds and DND control.



4 Wall control panel allowing light scene activation

Example of configuration with an Integrated system.



Typical functions for status of room

Function		Unsold	Sold Check-in	Sold occupied - Day	Sold occupied - Night	Sold unoccupied
	Lights	Off	Off	Day First Entry Welcome Scene / Day Welcome Scene or Previous Room status	Night First Entry Welcome Scene / Night Welcome Scene or Previous light status	Off
	Socket Line	Off	Off	On	On	Off
	Clima	Absence mode Hotel fixed setpoint	Eco mode Hotel fixed setpoint	Comfort mode Guest controlled setpoint	Comfort mode Guest controlled setpoint	Eco mode Hotel fixed setpoint
	Blinds	Closed	Closed	Open	Closed	Closed



Focus on room control systems.

Third party Non-integrated solutions.

Guestroom systems for light, temperature, and shade control that can be tailored to specific performance and budget requirements. For simple retrofit and new construction, it is easy to install and setup, and lets you control, monitor, and adjust light levels from anywhere using your smart device.

Welcome to your room.

Once inside, the various devices are immediately powered “automatically”, avoiding waste: the temperature is raised or lowered to the required comfort level and any welcome scenarios set up and customised in advance can be activated.

Safe and secure accesses.

The transponder outdoor reader displays the room status (DND) on the outside, granting access solely to authorised card holders.

Customised climate control and room state.

Switch the lights on and off, raise or lower the temperature or the roller shutters. And the room state can be displayed intuitively in the corridor outside the room.

Integration with other devices.

Thanks to the gateway, the system can be integrated with other connected devices in the room to allow the entrance door to be opened remotely, to control the automations in the room and to check the presence.



Focus on room control solutions.

Third party Non-integrated system.

Example of configuring a Non-integrated system for controlling the room's lights, shutters or curtains and the temperature, with the card reader or Presence Detection Logic that immediately powers the various devices in the room.



1 Connected room access



2 "Energy saver" transponder pocket

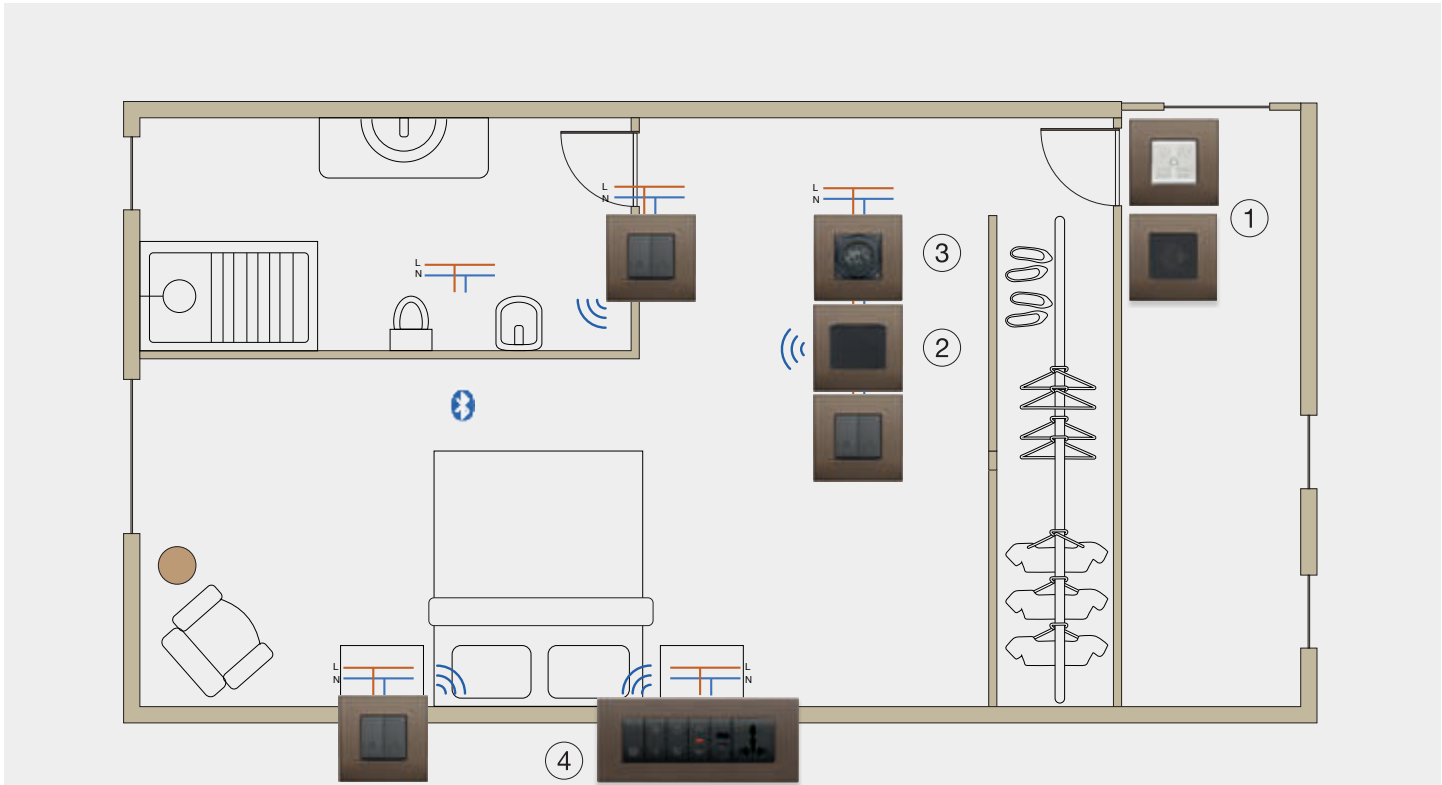


3 Smart dial thermostat



4 Headbed - easy access to light controls, electric and USB charging sockets

Example of configuration with Non-integrated system.



	Function	Action
	Lights control	On/Off, Phase cut dimming, DALI*, 0-10V*
	Clima control	On/Off valve, 3 speed and proportional fancoil, VRV integration*
	Automations	Blinds/Shutters
	Scenarios	Unlimited*
	Logic programs	Yes*
	Other supervision platform integration	Amazon Alexa, Google Home, Apple Homekit

* Functionalities depends on the technology chosen by Vimar

Room system solutions comparison.

	Third party Non-integrated system	Integrated system
Room Status	Occupied/Unoccupied	Occupied/Unoccupied Sold/Unsold
Presence detection	Card Holder Presence detection logic	Card Holder Presence detection logic
Access control integration	Room level	Room level Server Level
Welcome scenario activation	Fixed Time related Access type related	Fixed Time related Access type related First time access welcome scene
Supervision	//	Yes
PMS integration	//	Yes – Fias based PMS
BMS integration	//	Bacnet / KNX for lights, shutters and temperature status
Service software / IP TV integration	//	Yes
Room level supervision	Voice assistance integration	Yes with third party app Voice assistance integration



Integration with third-party systems.

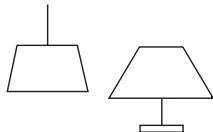
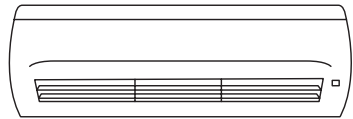
Seamless systems integration for coordinated and flexible management.

Systems made by different manufacturers, including, often coexist in the same hotel. The KNX standard, on which our Well-contact Plus system and By-me Plus are based, allows native communication with all products and systems that use this international protocol. But in order to offer an all-round service that integrates with non-KNX systems or products, Vimar continues to forge partnerships with other major brands whose products are widely used in hotels. Our goal is to provide a comprehensive, high-performance solution that meets the specifications of any type of establishment.



PMS systems

Well-contact Plus interfaces with leading hotel PMS programs and payment systems, so that guests can use their room card with RFID chip to access services and facilities run by external partners, with fees charged directly to the guest's final invoice.



Climate control systems

Our system integrates and communicates seamlessly with the most common climate control systems by means of a KNX standard gateway.



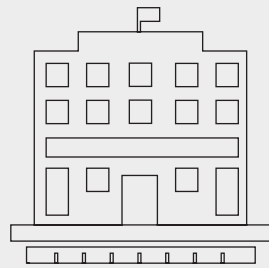
Third party access control systems

Our system integrates and communicates seamlessly with third party door lock systems.

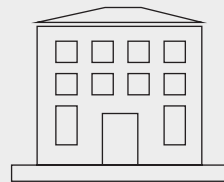


Lighting systems

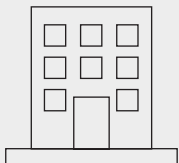
Compatibility with the lighting products and systems of leading brands is ensured by **DALI** and **DMX** gateways, non-proprietary protocols that are adopted by the main players in the sector, and by **EnOcean**, **Bluetooth** and **ZigBee** radio frequency technology.



LUXURY HOTELS



BOUTIQUE HOTELS



SMART HOTELS



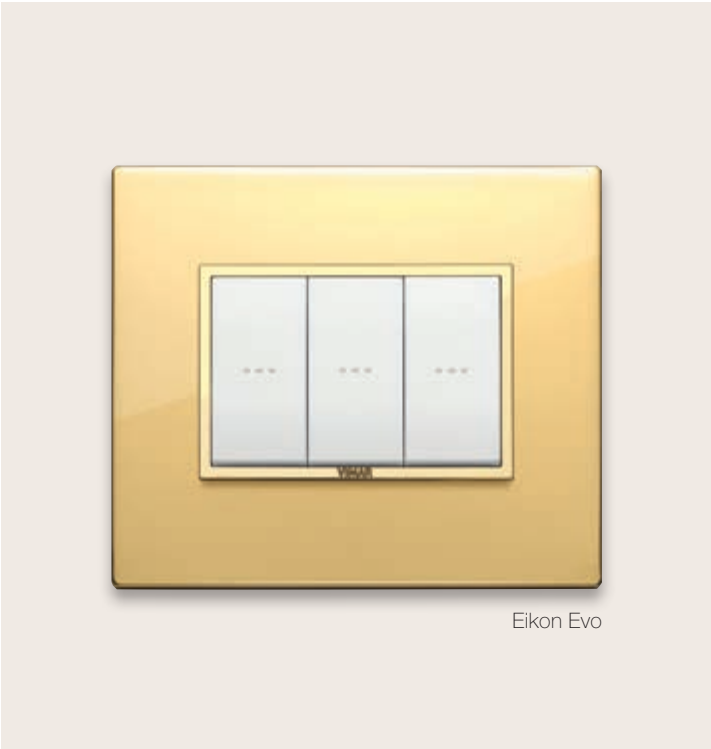
Our installations worldwide.

Every accommodation has its own specific needs in terms of design, management and maintenance.

Discover our solutions to optimise and automate the functions of any facility, regardless of size, from large hotels to small B&Bs with an emphasis on comfort, safety and energy efficiency at all times.

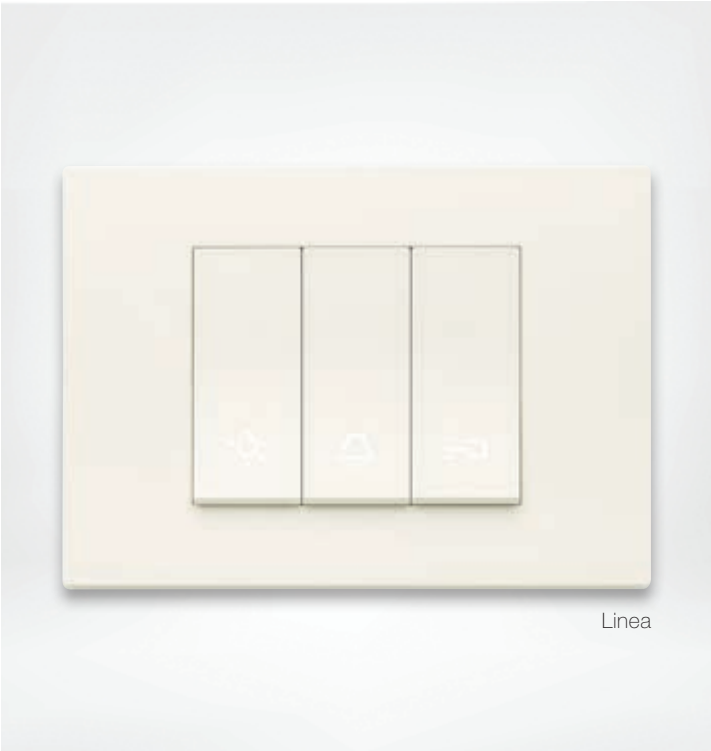
Banyan Tree Tamouda Bay.

Morocco



Myconian Ambassador Hotel & Spa.

Greece



Linea



Sheraton Hotel.

Israel



Arké



Regent Porto Montenegro.

Montenegro



Myconian Avaton Resort.

Greece



The following establishments have chosen to work with us:

EUROPA

- > Abaton Resort & Spa, Creta, Greece
- > Adoc Envoy Hotel, Belgrado, Serbia
- > Acandia Hotel, Rhodes, Greece
- > AeonicSuite & Spa, Mykonos, Greece
- > Aldemar Hotels, All Hotels, Greece
- > Ammos Hotel, Mykonos, Greece
- > Anax Resort & spa, Mykonos, Greece
- > Anemos Luxury Grand Hotel, Creta, Greece
- > Aqualux Hotel Spa Suite & Terme, Bardolino, Italia
- > Bill & Coo, Mykonos, Greece
- > Blue Palace, Creta, Greece
- > Cactus Royal Resort & Spa, Stalis, Greece
- > Cape Sounio, Athens, Greece
- > Caff  Pedrocchi, Padova, Italia
- > Cala di Volpe, Porto Cervo, Italia
- > Caldera, Creta, Greece
- > Cape Sounio, Atene, Greece
- > Cheap&Chic, Rimini, Italia
- > Creta Maris, Creta, Greece
- > Dama Dama, Rhodes, Greece
- > Dave by the Beach, Loutraki, Greece
- > Di Margio Luxury Hotel & Spa, Heraklion, Greece
- > Domes Noruz, Creta, Greece
- > Dorissa bay, Samos, Greece
- > Electra Palace, Thessaloniki, Greece
- > Elounda Bay Palace, Creta, Greece
- > Elounda Beach Hotel & Villas, Creta, Greece
- > Elounda Mare, Creta, Greece
- > Ethereal White Resort, Heraklion, Greece
- > Evilion Sea & Sun Hotel, Pieria, Greece
- > Esperia, Rodi, Greece
- > EuroCongressi, Lago di Garda, Italia
- > Excelsior Grand Hotel, Catania, Italia
- > Excelsior Hotel Gallia, Milano, Italia
- > Fairmont Monte Carlo, Monaco
- > Flaminio Inn, Pesaro, Italia
- > Four Points by Sheraton, Kaluga, Russia
- > Four Season Hotel Moscow, Mosca, Russia
- > Golf Resort Castellaro, Sanremo, Italia
- > Grand Resort Lagonissi, Atene, Greece
- > Hohe Dune, Rostock, Germania
- > Holiday Inn Suites, Atene, Greece
- > Hotel Accademia, Verona, Italia
- > Hotel Aragonesi, Catania, Italia
- > Hotel Citadines la Defense, Paris, France
- > Hotel Dame des Art, Paris, France
- > Hotel Cicerone, Roma, Italia
- > Hotel Crown Plaza, Atene, Greece
- > Hotel Diplomat, Rimini, Italia
- > Hotel Dolce, Monaco, Germania
- > Hotel Exedra, Roma, Italia
- > Hotel Grifone, P.so Campolongo, Italia
- > Hotel Imperiale, Taormina, Italia
- > Hotel Metropol Palace, Belgrado, Serbia
- > Hotel Pedrocchi, Asiago, Italia
- > Hotel Savoy, Firenze, Italia
- > Hotel Urban, Trieste, Italia
- > Hotel Vanvitelli, Caserta, Italia
- > Hotel Vigna Magica, Fontanafredda, Italia
- > Hoxton Hotel, Paris, Francia
- > I Resort Beach Hotel & Spa, Stalis, Greece
- > Katikies, Santorini, Greece
- > Kivotos Santorini, Santorini, Greece
- > Knossos Royal, Hersonisos, Greece
- > Kempinsky Grand Hotel, Tatras, Slovackia
- > La Principina, Grosseto, Italia
- > Lesante Blue, Zante, Greece
- > Lesante Cape, Zante, Greece
- > Locanda Tre Merli, Camogli, Italia
- > Malia Park, Rodi, Greece
- > Myconian Avaton Resort, Mykonos, Greece
- > Minos Beach, Creta, Greece
- > Miraggio Termal spa Resort, Calcidica, Greece
- > Miramare, Corf , Greece
- > Mr & Mrs White, Chania, Greece
- > Myconian Ambassador, Mykonos, Greece
- > Monroc Hotel, Val di Sole, Italia
- > Myconian Avaton Resort, Mykonos, Greece
- > Mykonos Blanc, Mykonos, Greece
- > Mykonos Grand Hotel & Spa, Mykonos, Greece
- > Nafplia Palace hotel & Villas, Peloponeso, Greece
- > Nana beach, Creta, Greece
- > Nikki Beach Resort & Spa, Santorini, Greece
- > Number Nine, Firenze, Italia
- > Palais Hansen Kempinski, Vienna, Austria
- > Park Hyatt, Amburgo, Germania
- > Petasos Beach Resort & spa, Mykonos, Greece
- > Pomegranate Hotel & Spa, Nea Potidea, Greece
- > Olympian Village, Olympia, Greece
- > Relais Casiglio, Erba, Italia
- > Relais Modern, Firenze, Italia
- > Relais San Lorenzo, Bergamo, Italia
- > Residence Miramare, Genova, Italia
- > Resort Renaissance il Ciocco, Lucca, Italia
- > Rifugio Sapienza, Monte Etna, Italia
- > Robinson Club Killini, Peloponeso, Greece
- > Rocabella, Santorini, Greece
- > Rodos Park, Rodi, Greece
- > Royal Marmin Bay, All Hotels, Greece
- > Santa Lucia, Napoli, Italia
- > Santa Marina, Mykonos, Greece
- > Santo Maris, Santorini, Greece
- > Somewhereelse, Atene, Greece
- > Spilja Village, Creta, Greece
- > Suite 10, Polignano a Mare, Italia
- > Terme Pigna, Imperia, Italia
- > Thai-Si, Treviso, Italia
- > The Golf Hotel, Creta, Greece
- > The Lesante Luxury Hotel & spa, Zante, Greece
- > The Met Hotel, Salonicco, Greece
- > The Westbury Mayfair, Londra, UK
- > Tigaki Beach, Kos, Greece
- > Torre di Moravola, Perugia, Italia
- > TownHouse Duomo, Milano, Italia
- > Venissa Wine Resort, Venezia, Italia
- > Villa Kennedy, Francoforte, Germania
- > Vi  , Polignano a Mare, Italia
- > Utopia Blue, Kos, Greece

ASIA

- > Ada Hotel, Istanbul, Turchia
- > Adam & Eve Hotel, Antalya, Turchia
- > Alila Jabal Akhdar, Al Khutaym, Oman
- > Al Aqeel Hotel, Madinah, Saudi Arabia
- > Al Izdhiar Housing Project, Amman, Jordan
- > Amerikan Poliklinigi, Istanbul, Turchia
- > Angels Peninsula Hotel, Mugla, Turchia
- > Anthill Residence, Istanbul, Turchia
- > Armoni Residence, Istanbul, Turchia
- > Barbaros Reserve, Bodrum, Turchia
- > Beijing Continental Grand Hotel, Beijing, China
- > Beirut Commodore Hotel, Beirut, Libano
- > Bodrum Residence, Bodrum, Turchia
- > Boyalik Otel, Izmir, Turchia
- > Braira al Rass Boudl Hotel, Al Rass, Saudi Arabia
- >  amilica Konaklari, Istanbul, Turchia
- > Caprice Palace Hotel, Aydin, Turchia
- > Caresse Hotel Ve Villa, Mugla, Turchia
- > Central Hotel, Shanghai, China
- > Charisma Hotel, Aydin, Turchia
- > Chongqing Langham Hotel, Chongqing, China
- > Citadines Tay Ho, Ha Noi, Vietnam
- >  orlu Divan Oteli, Tekirdag, Turchia
- > Courtyard By Marriott Xujiahui, Shanghai, China
- > Courtyard Pudong, Shanghai, China
- > Crowne Plaza Hotel, Beirut, Libano
- > Crowne Plaza Hotel, Istanbul, Turchia
- > Crowne Towers, Manila, Filippine
- > Dan Accadia Herzliya, Herzliya, Israele
- > David Intercontinental Hotel, Tel Aviv, Israele
- > Dhofar Beach Resort Hotel, Salalah, Oman
- > District 8 @ Senopati, Jakarta, Indonesia
- > Diyafa Royal Villa, Sharma, Saudi Arabia
- > Doubletree by Hilton Beijing, Beijing, China
- > Dusit Hotel In Bahrain, Manama, Seef, Bahrain
- > Eclipse Maslak, Istanbul, Turchia
- > Eden Bay Resort, Beirut, Libano
- > Emaar Square / Southwest, Istanbul, Turchia
- > En Hotel, Izmir, Turchia
- > Eser Premium Hotel, Istanbul, Turchia
- > Ev Hotel, Mugla, Turchia
- > Extensa Bomonti Apartmani, Istanbul, Turchia
- > Fairmont Hotel, Baku, Azerbaijan
- > Fantasia Hotel, Mugla, Turchia
- > Florya Avrupa Konaklari, Istanbul, Turchia
- > Four Points Al Safir, Bhamdoun, Libano
- > Four Points By Sheraton Hotel, Istanbul, Turchia
- > Grand Hyatt Hotel, Guangzhou, China
- > Grand Hyatt Kochi Bolgati Island, Kochi, India
- > Grand Hyatt Manila, Manila, Filippine
- > Grand Marina Intercontinental, Abu Dhabi, UAE
- > Haikou Hilton Hotel, Sanya, China
- > Heliopolitan Al Safir, Beirut, Libano
- > Hillside Su Hotel, Antalya, Turchia
- > Hilton Garden Inn Hotel, Istanbul, Turchia
- > Hilton Hotel Chengdu, Chengdu, China
- > Hilton Jeddah, Jeddah, Saudi Arabia
- > Hotel Collective Naha City Centre, Japan
- > Holiday Inn Canggu Bali, Bali, Indonesia

- > Holiday Inn Dunes, Beirut, Libano
- > Holiday Inn Express, Singapore, Singapore
- > Holiday Inn Hotel guangdong, Guanghzou, China
- > Holiday Inn Hotel, Istanbul, Turchia
- > Holiday Inn Jasmine Suzhou, Suzhou, China
- > Hotel Indigo Shanghai on the Bund, China
- > Hotel Sheraton, Beirut, Libano
- > Hotel, Antalya, Turchia
- > Hyatt Centric Tiara In Palm Jumeira, Dubai, UAE
- > Hyatt Regency, Riyadh Olaya, Arabia Saudita
- > Iber Princess World Bodrum, Bodrum, Turchia
- > Inter-continental Hotel Chengdu, Chengdu, China
- > Intercontinental Hotel, Doha, Qatar
- > Intercontinental Mzaar, Faraya, Libano
- > Intercontinental Singapore Robertson Quay
- > Itc Grand Chola Hotel, Chennai, India
- > Jinmao Hyatt Hotel Shanghai, Shanghai, China
- > Jw Marriott Hotel, Muscat, Oman
- > Kaya Ramada Hotel, Istanbul, Turchia
- > Kempinski  iragan Palace Hotel, Istanbul, Turchia
- > Kempinski Hotel Suzhou, Suzhou, China
- > Kempinski Hotel Wuxi, Wuxi, China
- > Kempinski Hotel, Mugla, Turchia
- > Kempinski Nusa Dua Bali, Bali, Indonesia
- > Kempinski Tel Aviv, Tel Aviv, Israele
- > Kempinski, Bali, Indonesia
- > Kimpton Tokyo Shinjuku, Shinjuku, Japan
- > Kuum Hotel, Mugla, Turchia
- > Kuum Villalari, Mugla, Turchia
- > L'amor Boutique Hotel, Quy Nhon, Vietnam
- > Lancaster Hotel, Beirut, Libano
- > Limak Lara Hotel, Antalya, Turchia
- > Maki Otel, Mugla, Turchia
- > Mandarin Crown Hotel, Taipei, Taiwan
- > Marriott Edition Hotel, Mugla, Turchia
- > Marriott Hotel, Istanbul, Turchia
- > Marriott Resort & Spa, Caticlan, Philippines
- > Mercure On Stevens Road, Singapore, Singapore
- > Messila Resort & Villas, Doha, Qatar
- > Millennium Hotel, Hail City, Arabia Saudita
- > M venpick Ha Noi, Ha Noi, Vietnam
- > M venpick Hotel, Izmir, Turchia
- > M venpick Hotel, Mugla, Turchia
- > Nayman Suites, Izmir, Turchia
- > Nest Ortak y, Istanbul, Turchia
- > New World Hotel Dalian, Dalian, China
- > Novotel On Stevens Road, Singapore Singapore
- > Novotel Suites Manila at Acqua, Philippines
- > Oakwood Premier Cozmo, Jakarta, Indonesia
- > Okada, Manila, Filippine
- > Ora Istanbul Center, Istanbul, Turchia
- > Novotel Suites Manila at Acqua, Philippines
- > Pelican Hill Ihlamur Evleri, Istanbul, Turchia
- > Piyalepasa Istanbul, Istanbul, Turchia
- > Point Hotel, Istanbul, Turchia
- > Portville, Mugla, Turchia
- > Radisson Hotel Changshu, Changshu, China
- > Radisson Blu Hotel, Istanbul, Turchia
- > Radisson Blu Hotel, Kayseri, Turchia

- > Raffles Hotel, Istanbul, Turchia
- > Ramada 2000 Hotel, Ankara, Turchia
- > Ramada Hotel, Istanbul, Turchia
- > Ramada Otel, Kayseri, Turchia
- > Ramada Plaza Istanbul Hotel, Istanbul, Turchia
- > Ramada Plaza Shunde Foshan, Foshan, China
- > Regal EastAsia Shanghai, Shanghai, China
- > Regency Hotel Ningbo, Ningbo, China
- > Resort Hotel, Mugla, Turchia
- > Ridgewood Towers Condotel, Manila, Philippines
- > Ritz-carlton Hotel Sanya, Sanya, China
- > Riva Hotel, Istanbul, Turchia
- > Royal Plaza, Beirut, Libano
- > Royal Benagal Kolkata, Kolkata, India
- > Sanabel Madina Hotel, Madinah, Saudi Arabia
- > Sanya Luneng Marriott Hotel, Sanya, China
- > Sarigerme Golf Hotel, Mugla, Turchia
- > Savoy Ulus Konutlari, Istanbul, Turchia
- > Sea Rock Hotel, Beirut, Libano
- > Seaview Hotel, Khobar, Saudi Arabia
- > Shanghai Ruijin Hotel, Shanghai, China,
- > Shangri-La Bosphorus Hotel, Istanbul, Turchia
- > Shangri-La Hotel, Guangdong, Guanghzou, China
- > Shangri-La Hotel, Istanbul, Turchia
- > Shenzhen Hilton Hotel, Shenzhne, China
- > Sheraton Hotel Zhoushan, Zhoushan, China
- > Sheraton Chongqing Hotel, Chongqing, China
- > Sheraton Grand Taipei, Taipei, Taiwan
- > Sheraton guangdong Hotel, Guanghzou, China
- > Sheraton Hotel, Adana, Turchia
- > Sheraton Hotel, Istanbul, Turchia
- > Sheraton Hotel, Samsun, Turchia
- > Six Senses Southern Dunes, umluj, Saudi Arabia
- > Smart Hotel, Izmir, Turchia
- > Sofa Hotel, Istanbul, Turchia
- > Sofitel Riverside Qingyuan, Quingyuan, China
- > Sultan Makami, Istanbul, Turchia
- > Susesi Resort Hotel, Antalya, Turchia
- > Taksim Select Hotel, Istanbul, Turchia
- > The Fullerton Hotel, Singapore, Singapore
- > The Marmara Hotel, Istanbul, Turchia
- > The Puli Hotel, Shangai, China
- > The Regent Taipei, Taipei, Taiwan
- > The Wave Plaza Hotel, Muscat, Oman
- > Titanic Business Hotel, Istanbul, Turchia
- > Titanic City Hotel, Istanbul, Turchia
- > Tomson Otel, Istanbul, Turchia
- > Toskana Vadisi Evleri, Istanbul, Turchia
- > Tryp By Wyndham Hotel, Istanbul, Turchia
- > Vichy Resort Hotel & Villas, Doha, Qatar
- > Viftur Konut Projesi, Izmir, Turchia
- > W Hotel Shanghai, Shanghai, China
- > W Hotel, Istanbul, Turchia
- > W Taipei, Taipei, Taiwan
- > Windsor Hotel Taichung, Taichung, Taiwan
- > Wyndham Grand Istanbul, Istanbul, Turchia
- > Wyndham Hotel, Istanbul, Turchia
- > Village Hotel Sentosa, Singapore, Singapore
- > WINK Hotel Da Nang Centre, Da Nang, Vietnam

AFRICA

- > Apparthotel Park Hyatt, Marrakech, Marocco
- > Apparthotel Suncity, Rabat, Marocco
- > Banyan Tree Tamouda Bay, Fnideq, Marocco
- > Bayazid & Spa, Alger, Algeria
- > Belle Vue, Skikda, Algeria
- > Corinthia Hotel, Khartoum, Sudan
- > Four Point Sheraton, Oran, Algeria
- > Four Points Sheraton, Oran, Algeria
- > Hotel Campanil, Casablanca, Marocco
- > Hotel Radisson Blue, Marrakech, Marocco
- > Hotel Royal Atlas, Agadir, Marocco
- > Hotel Rivoli, Casablanca, Marocco
- > Hotel Sheraton, Casablanca, Marocco
- > Hotel Sofitel, Marrakech, Marocco
- > Hotel Sofitel, Rabat, Marocco
- > Hotel Tikida Beach, Agadir, Marocco
- > Hotel Tikida Dune, Agadir, Marocco
- > Hotel Tikida Golf Palace, Agadir, Marocco
- > Marrakech Radisson Blu, Marrakech, Marocco
- > Melissa Oran, Oran, Algeria
- > MF Hotel, Oran, Algeria
- > Michlif n Ifrane Suites & Spa, Ifrane, Marocco
- > Plaza Boumerdes & Spa, Boumerdes, Algeria
- > Radamis Villas, Sharm El Sheikh, Egypt
- > Radisson Blue Hotel, Hydra, Algeria
- > Renaissance Tlemcen Hotel, Tlemcen, Algeria
- > Saint Heugene Beo, Alger, Algeria
- > Sheraton Hotel, Annaba, Algeria

AMERICAS

- > El Santuario, Villa del Bravo, Messico
- > Hotel Cumanagoto, Cumana, Venezuela
- > Hyatt Hotel, Cancun, Messico
- > Hyatt Ziva Cancun, Cancun, Messico
- > Isla Paraiso Venezuela, Puerto La Cruz, Venezuela
- > Le Blanc, Los Cabos, Messico
- > Moon Palace, Cancun, Messico
- > Tambo del Inka Resort & Spa, Urubamba, Per 

OCEANIA

- > Park Hyatt Sydney, Sydney, Australia
- > Queen's Wharf Brisbane, Brisbane, Australia
- > The Continental Hotel Broome, Broome, Australia

HOTEL SOLUTIONS

Welcome to a comfortable and efficient hospitality world	01
Comfortable and energy efficiency solutions	11
Lifestyle wiring devices	35
High-performance solutions and advanced technology	69
Our installations worldwide	83

100% Made in Italy



Energia Positiva. Insieme

