



BB ACETAL SHEAVE - ACETAL BALL BEARINGS



BB ALUMINIUM SHEAVE - TORLON® BALL BEARINGS



BB ALUMINIUM RATCHET SHEAVE - ACETAL BALL BEARINGS



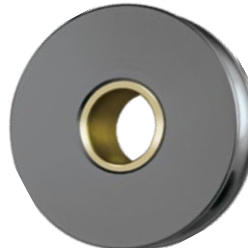
AP ACETAL SHEAVE



AP GLASS REINFORCED NYLON SHEAVE



SP NYLATRON® SHEAVE



SP ALUMINIUM SHEAVE - BRASS BEARING

BB BALL BEARING SHEAVES

✔ Ball bearings provide minimum friction under moderate loads.

AP ALL PURPOSE SHEAVES

✔ Acetal sheave models have high strength and utilise the self-lubricating properties of acetal.

✔ Glass reinforced nylon models have greater strength and abrasion resistance.

SP SPECIAL PURPOSE SHEAVES

✔ Nylatron® models utilise a cast partially cross-linked polyamide compound, modified with a MoS2 filler for lubrication and to minimise wear. They are suitable for use with wire or rope.

✔ Aluminium models have a self-lubricating brass bearing. They are suitable for use with wire or rope.

PRODUCT No.	BLOCK SUITED	DIAM. mm	BORE mm	WIDTH mm	MAX. ROPE mm	MAX. WIRE mm	WEIGHT g	DIAM. in	BORE in	WIDTH in	MAX. ROPE in	MAX. WIRE in	WEIGHT oz
BB Acetal - Ball Bearing													
RF15000		15.0	4.7	7.1	5	-	3	5/8	3/16	9/32	3/16	-	0.1
RF1020		28.0	5.0	11.1	6	-	6	1 1/8	3/16	7/16	1/4	-	0.2
RF35000		30.0	10.4	10.2	8	-	7	1 3/16	3/8	7/16	5/16	-	0.2
RF1766		38.0	8.0	15.0	10	-	15	1 1/2	5/16	19/32	3/8	-	0.5
RF1767		50.4	8.0	17.5	10	-	33	2	5/16	11/16	3/8	-	1.2
RF60000		60.0	3 x 6.2	16.6	10	-	50	2 3/8	3 x 7/32	21/32	3/8	-	1.8
RF70000		75.0	3 x 6.2	20.8	12	-	104	3	3 x 7/32	13/16	1/2	-	3.7
BB Aluminium - Ball Bearing													
RF34000		30.0	6.0	7.7	5	-	10	1 3/16	7/32	5/16	3/16	-	0.4
RF44000		40.0	6.0	10.1	6	-	15	1 9/16	7/32	13/32	1/4	-	0.5
RF62000	Series 60 Ultimate Ratchet	60.0	3 x 6.1	16.6	10	-	45	2 3/8	3 x 7/32	21/32	3/8	-	1.6
RF72000	Series 75 Ultimate Ratchet	75.0	3 x 6.1	20.8	12	-	95	3	3 x 7/32	13/16	1/2	-	3.4
AP Acetal													
RF1741		19.0	6.6	6.4	6	-	1	3/4	1/4	1/4	1/4	-	0.1
RF1743		19.0	8.2	9.5	6	-	2	3/4	5/16	3/8	1/4	-	0.1
RF578		25.0	6.5	9.5	6	-	4	1	1/4	3/8	1/4	-	0.1
RF1746		26.0	9.8	12.0	8	-	5	1	3/8	15/32	5/16	-	0.2
RF128		28.0	8.1	15.2	12	-	7	1 1/8	5/16	19/32	1/2	-	0.2
RF129		28.0	6.6	9.9	8	-	6	1 1/8	1/4	3/8	5/16	-	0.2
RF41000		40.0	8.1	14.4	10	-	15	1 9/16	5/16	9/16	13/32	-	0.5
RF1006	Series 40 Deck Organisers	38.0	12.7	15.5	12	-	21	1 1/2	1/2	19/32	1/2	-	0.7
RF1751		38.0	8.2	10.2	6	-	10	1 1/2	11/32	13/32	1/4	-	0.4
RF1759		50.0	8.1	15.6	14	-	22	1 15/16	11/32	19/32	9/16	-	0.8
RF437		59.0	11.0	19.0	16	-	43	2 5/16	7/16	3/4	5/8	-	1.5
RF1765		66.0	8.2	15.1	5	-	35	2 5/8	11/32	15/32	3/16	-	1.2
RF431*		73.0	13.0	22.0	14	-	97	2 7/8	15/32	7/8	9/16	-	3.4
RZ1000	Series 75 Industrial	75.0	21.7	20.5	14	-	70	2 15/16	7/8	13/16	9/16	-	2.5
AP Glass Reinforced Nylon													
PNP98JR		75.0	13.0	15.8	10	-	59	2 15/16	15/32	19/32	3/8	-	2.1
PNP98KR		100.0	13.0	19.0	12	-	80	3 15/16	15/32	3/4	1/2	-	2.8
SP Nylatron®													
RF20000HL		20.0	8.1	8.8	6	3	2	3/4	5/16	3/8	1/4	1/8	0.1
RF430	RF468	25.0	6.5	7.0	5	5	10	1	1/4	9/32	3/16	3/16	0.4
RF30000HL		30.0	8.1	11.4	8	3	6	1 3/16	5/16	7/16	5/16	1/8	0.2
RF40000HL		40.0	8.1	13.4	10	4	15	1 1/2	5/16	17/32	3/8	5/32	0.5
RF132	RF103, RF104	45.0	8.0	9.5	-	6	33	1 3/4	5/16	3/8	-	1/4	1.2
RF50000HL		50.0	10.2	18.0	12	5	28	1 31/32	13/32	23/32	1/2	3/16	1.0
SP Aluminium - Brass Bearing													
RZ1000AW	Series 75 Industrial	75.0	21.7	20.2	-	8	190	-	7/8	13/16	-	5/16	6.7

* Acetal sheave with bronze bearing



AP ALL PURPOSE SHEAVES

- Sheave: UV stabilised acetal.
- Hub bush: Grade 316 stainless steel.

BB BALL BEARING SHEAVES

- Sheave: Aluminium alloy.
- Needle rollers: Torlon® (RF68000: PEEK, RF68000W: acetal).
- Ball bearings: High compression strength acetal.

PRODUCT No.	DESCRIPTION	SHEAVE DIAM. mm	WIDTH mm	MAX. ROPE mm	M.W.L. kg	WEIGHT g	SHEAVE DIAM. in	WIDTH in	MAX. ROPE in	M.W.L. lb	WEIGHT oz
BB Ball Bearing											
RF68000	Sheave	60	20.5	14	1500	85	2 3/8	13/16	9/16	3310	3.0
RF68000W	Sheave, wide	60	33.0	25	1150	128	2 3/8	1 5/16	1	2540	4.5
RF78000	Sheave	75	20.5	14	1750	142	3	13/16	9/16	3850	5.0
RF78000W	Sheave, wide	75	41.5	25	2800	280	3	1 5/8	1	6160	9.9
RF108000	Sheave	100	20.5	14	2000	262	4	13/16	9/16	4400	9.2
RF108000W	Sheave, wide	100	41.5	25	3900	497	4	1 5/8	1	8600	17.5
RF128000	Sheave	125	20.5	16	3000	448	5	13/16	5/8	6600	15.8
RF128000W	Sheave, wide	125	41.5	32	6650	817	5	1 5/8	1 1/4	14660	28.8
RF158000	Sheave	150	27.5	20	5000	739	6	1 3/32	3/4	11000	26.1
RF158000W	Sheave, wide	150	41.5	32	8100	1164	6	1 5/8	1 1/4	17860	41.1
AP All Purpose											
RF61000	Sheave	60	20.5	14	1000	67	2 3/8	13/16	9/16	2200	2.4
RF71000	Sheave	75	20.5	14	1500	128	3	13/16	9/16	3310	4.5