

SAILING GEAR

PERFORMANCE. COMFORT. CONFIDENCE.

Ronstan's sailing gear is designed for sailors by sailors. Each item in the range has been developed in conjunction with our team sailors and has undergone rigorous testing at the most extreme level so you know you'll be covered regardless of the sort of sailing you're into – recreational through to international competition.

The latest material and production technologies are integrated within the designs and an intelligent layering system delivers the flexibility to kit out for all conditions.

Laminates for warmth

We use a combination of high performance materials with unique properties, formed into specifically functional laminates. These laminates are distributed strategically within the panel layout for optimum water repellency, drying speed, thermal comfort and wind protection.

Ultimate flexibility

Carefully selected high-stretch fabrics in varying thicknesses maximise comfort and flexibility. They feel soft but have the ability to retain their shape and fit.

Layering options

Integral to the Ronstan range is a choice of layering options to suit any weather conditions. Whether it's a sun protection rash top, a hydrophobic fleece-lined thermal or a neoprene top, you can mix and match to form the best combination for the conditions.

Lightweight

All sailors know that thinner usually means lighter. We put the focus on efficiency. The high performance CL250 Pants use super light neoprene foam which is 20% lighter than conventional neoprene. The result is a lighter-weight wetsuit just 2mm (5/64") thick, with no compromise on warmth. While the reduced weight and flexibility are key features, the wetsuit panel design also provides abrasion resistance and extra padding where needed.

Junior range

The CL210J Thermal top, CL800J, CL810J Smock Top and CL260J Shorts make up our Junior range, available in sizes 8 to 12. All the great features of the adult range, but specifically sized and shaped to be the right fit for our youngest sailors.



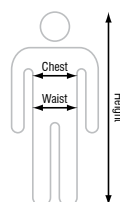
CL270 SKIFFSUIT™

INTELLIGENT FEATURES

Developed in conjunction with our team sailors and leading experts in the latest materials and production techniques, Ronstan's wetsuits integrate an intelligent layering system that delivers performance, warmth and flexibility for any conditions, regardless of the kind of sailing you do.

- 1 Super-Stretch Entry**
Lightweight 4-way stretch material offers convenient entry and unrivalled flexibility.
- 2 Mesh-Skin Embossed Chest Panel**
Eliminates wind chill affect and the fast-drying fleece-liner keeps you drier and warmer.
- 3 Abrasion Resistant Seat Panel**
Reinforced seat for durability and additional rear thigh padding for comfort while hiking.
- 4 Reinforced Knees and Insert**
Maximising your protection and durability, a Skiffsuit™ hallmark.
- ✓ **2mm (5/64") thick, with 3mm (1/8") thick rear thigh padding**
Just-right thickness for warmth and protection.
- ✓ **Available Sizes**
XXS – XXL

SIZE	HEIGHT cm	CHEST cm	WAIST cm	HEIGHT ft in	CHEST in	WAIST in
Skiffsuit™						
XXS	163 - 168	86 - 91	63 - 69	5' 4" - 5' 6"	33 - 35	25 - 27
XS	167 - 172	90 - 95	67 - 73	5' 6" - 5' 8"	35 - 37	26 - 29
S	171 - 176	94 - 99	71 - 77	5' 7" - 5' 9"	37 - 39	28 - 30
M	175 - 180	98 - 103	75 - 81	5' 9" - 5' 11"	39 - 41	30 - 32
L	179 - 184	102 - 107	79 - 86	5' 10" - 6' 0"	40 - 42	31 - 34
XL	183 - 188	106 - 111	83 - 90	6' 0" - 6' 2"	42 - 44	33 - 35
XXL	187 - 192	110 - 115	87 - 94	6' 2" - 6' 4"	43 - 45	34 - 37



*Sizes based on person not garment



CL250

NEOPRENE PANTS

- ✓ **2mm (5/64") thick, with 3mm (1/8") thick rear thigh padding**
Just-right thickness for warmth and protection.
- ✓ **High & Wide Waist**
Gives lower-back protection and over-lap with top. Wide waist belt with hook-and-loop adjustment for added comfort and secure fit.
- ✓ **Super-Light Neoprene**
20% lighter with greater comfort and no compromise on warmth.
- ✓ **Hydrophobic Soft-Brushed Lining**
Keeps skin drier and warmer.
- ✓ **Padded Knee Inserts**
Seamless behind-the-knees design for max comfort.
- ✓ **Available Sizes**
XS – XXL

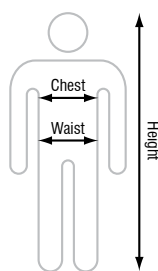


CL260

NEOPRENE SHORTS

- ✓ **2mm (5/64") thick, with 3mm (1/8") thick rear thigh padding**
Just-right thickness for warmth and protection.
- ✓ **Ultra-Comfortable**
The elastic drawstring waist, Glideskin leg openings and soft leg rolls above knees provide excellent flexibility and comfort.
- ✓ **Quick-Dry Capable**
Lined with quick-dry plush thermal lining.
- ✓ **Super-Stretchy & Abrasion Resistant**
Seat and hiking panels at the backs of the thighs and flexible side panels provide continual comfort when hiking, while the non-slip leg openings minimise moisture and ride-up.
- ✓ **Available Sizes**
Adult XS – XXL; Junior: J08, J10, J12

SIZE	HEIGHT cm	CHEST cm	WAIST cm	HEIGHT ft in	CHEST in	WAIST in
Shorts						
J08	127 - 134	67 - 71	59 - 64	4' 2" - 4' 5"	26 - 28	23 - 25
J10	135 - 144	71 - 75	62 - 67	4' 5" - 4' 9"	28 - 30	24 - 26
J12	146 - 155	75 - 79	65 - 70	4' 9" - 5' 1"	30 - 31	25 - 28
Pants & Shorts						
XS	167 - 172	90 - 95	67 - 73	5' 6" - 5' 8"	35 - 37	26 - 29
S	171 - 176	94 - 99	71 - 77	5' 7" - 5' 9"	37 - 39	28 - 30
M	175 - 180	98 - 103	75 - 81	5' 9" - 5' 11"	39 - 41	30 - 32
L	179 - 184	102 - 107	79 - 86	5' 10" - 6' 0"	40 - 42	31 - 34
XL	183 - 188	106 - 111	83 - 90	6' 0" - 6' 2"	42 - 44	33 - 35
XXL	187 - 192	110 - 115	87 - 94	6' 2" - 6' 4"	43 - 45	34 - 37



*Sizes based on person not garment



CL240

NEOPRENE SKIN TOP

- ✓ **1.5mm (1/16") Thick**
Lightweight and super-tough!
- ✓ **High-Stretch Fabric**
Includes seamless underarm panels for freedom of movement.
- ✓ **Plush Thermal Lining**
Soft-feel fleece that is quick drying.
- ✓ **Non-Chafe Neoprene Collar**
Glideskin collar & cuffs for greater comfort.
- ✓ **Available Sizes**
XS - XXL

CL210

THERMAL TOP

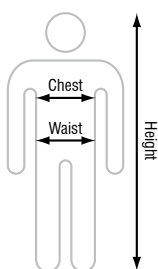
- ✓ **Maximum Comfort**
Low collar, seamless underarm panels and an athletic fit make it perfect for layering.
- ✓ **Hydrophobic Outer Treatment**
Helps shield you from unwanted splashes and sprays.
- ✓ **UV-Smart**
UPF 50+ UV-protection against the sun.
- ✓ **Available Sizes**
Adult XS - XXL; Junior: J08, J10, J12

CL220

LONG SLEEVE RASHIE

- ✓ **Maximum Comfort**
Seamless underarm panel and external stitching for a great fit.
- ✓ **UV-Smart**
UPF 50+ UV-protection against the sun.
- ✓ **Ultra-Versatile**
Perfect for any sunny-day action - sailing, surfing or paddling.
- ✓ **Available Sizes**
XS - XXL

SIZE	HEIGHT cm	CHEST cm	WAIST cm	HEIGHT ft in	CHEST in	WAIST in
Tops						
J08	127 - 134	67 - 71	59 - 64	4' 2" - 4' 5"	26 - 28	23 - 25
J10	135 - 144	71 - 75	62 - 67	4' 5" - 4' 9"	28 - 30	24 - 26
J12	146 - 155	75 - 79	65 - 70	4' 9" - 5' 1"	30 - 31	25 - 28
Tops						
XS	167 - 172	90 - 95	67 - 73	5' 6" - 5' 8"	35 - 37	26 - 29
S	171 - 176	94 - 99	71 - 77	5' 7" - 5' 9"	37 - 39	28 - 30
M	175 - 180	98 - 103	75 - 81	5' 9" - 5' 11"	39 - 41	30 - 32
L	179 - 184	102 - 107	79 - 86	5' 10" - 6' 0"	40 - 42	31 - 34
XL	183 - 188	106 - 111	83 - 90	6' 0" - 6' 2"	42 - 44	33 - 35
XXL	187 - 192	110 - 115	87 - 94	6' 2" - 6' 4"	43 - 45	34 - 37



*Sizes based on person not garment



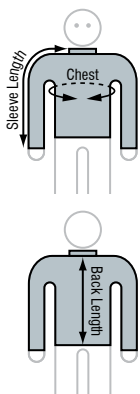
CL800 RED & CL810 BLACK SMOCK TOP PERFECT SOLUTION

The Regatta Smock Top's premium technical fabrics, practical design and smart-fit features meet the demands of today's casual and competitive sailors alike. Layered in combination with the Ronstan Thermal Top or Ronstan Rashie and you're set for whatever the day throws at you.

- 1 Extreme Waterproof Capability**
Featuring Ronstan's improved and highly waterproof R-Tech10 fabric - exceeding the demands of today's competitive sailors.
- 2 High-Ingress Protection**
Front neck opening with internal gusset and neck closure tab keeps water out and wearer dry.
- 3 Breathable Comfort**
Triple layered fabric with taped inner shell provides wearer with a comfortable, breathable fit.
- 4 Snug-flex Fit**
Neoprene waist band, stretch cuffs and neck seals with hook-and-loop adjustments, ensures a warm, snug fit and non-slip finish reduces ride-up.
- ✓ PFD-Ready**
Designed to be worn under PFD, the athletic cut makes for a closer fit, while still providing freedom of movement and zipped pockets are accessible, with or without a PFD on.
- ✓ Easy Access**
Side access breast pocket with water resistant zip provides easy access; even when wearing a PFD.
- ✓ Available Sizes**
Adult XS - XXL; Junior: J10, J12

SIZE	CHEST cm	BACK LENGTH cm	SLEEVE LENGTH cm	CHEST in	BACK LENGTH in	SLEEVE LENGTH in
Smock Top						
J08	77	54	62	30	21	24
J10	86	58	66	34	23	26
J12	94	63	71	37	25	28
Smock Top						
XXS	100	65	76	39	26	30
XS	106	68	79	42	27	31
S	111	70	82	44	28	32
M	119	72	84	47	28	33
L	124	74	86	49	29	34
XL	129	76	88	51	30	35
XXL	133	78	90	52	30	35
XXXL	135	80	92	53	31	36

*Sizes based on garment not person





PRODUCT		CL210 Thermal Top	CL240 Neoprene Skin Top	CL220 Rash Top	CL800 & CL810 Smock Top
Features		Warm when dry	Warm when wet	Sun protection	Waterproof & windproof barrier
Conditions	Layers				
Cold - Wet - Windy	3	•	•		•
Cold - Dry - Light / No Wind	2	•			•
	2	•	•		
Warm - Wet - Windy	2			•	•
	1		•		
Hot - Wet - Windy	2			•	•
Very Hot	1			•	





CL700 CUT FINGERS
CL710 THREE FULL FINGERS
RACE GLOVES

Durable, synthetic leather gloves that provide max performance with minimum stretch and shrinkage for all your demanding water sport activities – sailing, kayaking, kiteboarding, SUP-ing.

- ✓ **Double-Tough**
Double Aramid-stitched in high-wear areas and double-thick palms and fingers for protection and grip.
- ✓ **Great Flex-Fit**
Hook-and-loop closures and mesh panels add flexibility and comfort.
- ✓ **Versatile**
Low-cut wrist bands for freedom of movement and excellent ClearStart™ watch visibility and operation.
- ✓ **Available Sizes**
XXXXS – XXL

CL730 CUT FINGERS
CL740 THREE FULL FINGERS
STICKY RACE GLOVES

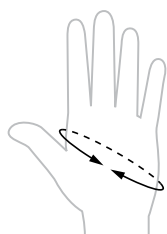
Sticky Race Gloves add grip and reduce fatigue by minimising the physical effort to hold rope – the perfect partner for endurance sailing.

- ✓ **Double-Tough**
Double Aramid-stitched in high-wear areas and double-thick palms and fingers for protection and grip.
- ✓ **Great Flex-Fit**
Hook-and-loop closures and mesh panels add flexibility and comfort.
- ✓ **Versatile**
Low-cut wrist bands for freedom of movement and excellent ClearStart™ watch visibility and operation.
- ✓ **Available Sizes**
XXS – XXL

RF2602
TECHNICAL SAILING CAP

- ✓ Breathable.
- ✓ Quick drying.
- ✓ Retainer cord and clip.
- ✓ Washable.
- ✓ One size fits most.
- ✓ Hydrophobic outer layer.
- ✓ Sweat band for comfort and retention.
- ✓ Black under peak to reduce glare.
- ✓ Adjustable hook-and-loop rear closure for secure fit.
- ⚙ Polyester microfibre.

SIZE	HAND SIZE* cm	HAND SIZE* in
Gloves		
XXXXXS	18	7
XXXS	19	7 1/2
XXS	20	7 7/8
XS	21	8 1/4
S	22	8 5/8
M	23	9
L	24	9 1/2
XL	25.5	10
XXL	26.5	10 3/8





CL600 SUPERFLEX SAILING SHOE

- ✓ **Ultra-Light & Super-Flexible**
The perfect combination.
- ✓ **Unrivalled Stability & Comfort**
Internal toe separator and outer bridge strap give you improved stability.
- ✓ **Extra Protection**
Added heel, ankle and toe padding offer more protection.
- ✓ **Available Sizes**
XXXS - XXXL

CL630 SAILING BOOT

- ✓ **Tried & True**
Traditional razor-cut sole for performance grip.
- ✓ **Easy Entry**
Side zipper for easy fitting and reinforced neoprene upper for hiking comfort.
- ✓ **Lightweight & Comfortable**
The perfect combo.
- ✓ **Reinforced Comfort**
Padded neoprene upper reinforced for hiking comfort.
- ✓ **Available Sizes**
XXXS - XXXL

CL620 RACE BOOT

- ✓ **Race-Ready!**
Hard-wearing, moulded sole with extra heel and toe texturing provides reliable grip and firm footing.
- ✓ **Easy-On**
Side zipper with secure fastener tab for an easy on-and-off and a snug fit.
- ✓ **Reinforced Comfort**
Padded neoprene upper reinforced for hiking comfort.
- ✓ **Available Sizes**
XXS - XXXL

CL640 OFFSHORE BOOT

- ✓ **Race-Ready!**
Hard-wearing, moulded sole with extra heel and toe texturing provides reliable grip and firm footing.
- ✓ **Easy-On**
Three-quarter length cut with toggle lock strings for comfort, warmth and protection.
- ✓ **Support & Comfort**
Removable inner soles for added foot support and quick drying.
- ✓ **Available Sizes**
XXS - XXXL

SIZE*	FOOT LENGTH cm	FOOT LENGTH in	EUROPE	US & CANADA MENS	UK MENS	AUSTRALIA MENS	JAPAN MENS	US & CANADA WOMENS	UK WOMENS	AUSTRALIA WOMENS	JAPAN WOMENS
Footwear											
XXXS	21 - 22	8 1/4 - 8 5/8	33 - 34	3	2	2	21	3	2	2	21
XXS	22.5 - 23.5	8 7/8 - 9 1/4	35 - 36	3.5 - 4.5	3 - 4	3 - 4	21 - 22	5 - 6	2.5 - 3.5	3.5 - 4.5	21 - 22
XS	23.5 - 24.5	9 1/4 - 9 5/8	36 - 38	4.5 - 6	4 - 5.5	4 - 5.5	22 - 23.5	6 - 7.5	3.5 - 5	4.5 - 6	22 - 23.5
S	24.5 - 25.5	9 5/8 - 10	38 - 40	6 - 7.5	5.5 - 7	5.5 - 7	23.5 - 25	7.5 - 9	5 - 6.5	6 - 7.5	23.5 - 25
M	25.5 - 26.5	10 - 10 1/2	40 - 43	7.5 - 9	7 - 8.5	7 - 8.5	25 - 27	9 - 10.5	6.5 - 8	7.5 - 9	25 - 27
L	26.5 - 27.5	10 3/8 - 10 3/4	43 - 44	9 - 10.5	8.5 - 10	8.5 - 10	27 - 28	10.5 - 12	8 - 9.5	9 - 10.5	27 - 28
XL	27.5 - 28.5	10 3/4 - 11 1/4	44 - 46.5	10.5 - 12.5	10 - 12	10 - 12	28 - 30	12 - 14	9.5 - 11.5	10.5 - 12.5	28 - 30
XXL	28.5 - 29.5	11 1/4 - 11 5/8	46.5 - 48.5	12.4 - 14	12 - 13.5	12 - 13.5	30 - 31	14 - 15.5	11.5 - 13	12.5 - 14	30 - 31
XXXL	29.5 - 30.5	11 5/8 - 12	48.5 - 50	14 - 15	13.5 - 14	13.5 - 14	-	-	-	-	-

*Typical equivalent country size. Indicative only and subject to variation. Your 'foot length' measurement should be used as the most accurate guide for sizing.



RF4002 GEAR BAG

- ✔ Roomy interior with double zip top flap for easy access.
- ✔ Two end pockets, one with mesh for drainage and ventilation.
- ✔ Adjustable, heavy duty webbing handles with padded grip.
- ✔ Central strap with buckle for securing a jacket or other gear on top.
- ✔ Includes a separate 10-litre waterproof grab bag for your wet gear.
- ✔ Dimensions: H350mm x W650mm x D300mm (H13 3/4" x W25 1/2" x D12")

RF1706 NUMBER STRIP

- ✔ Use as a reference scale for halyard tension, jib lead or main traveller positions.
- ✔ 230mm (9") long.
- ✔ Self-adhesive backing.

CL16 SUNGLASSES STRAP

- ✔ Neoprene strap ends slide directly onto sunglasses temples.

RF4020 PROTEST FLAG

- ✔ Hook-and-loop fastener strips secure the flag around any stay.
- ✔ Rolls up to secure with locking tab, ready to deploy.
- ✔ 230mm x 140mm (9" x 5 1/2").
- ✔ Laser cut ripstop nylon.

RF4025 TELL TAILS (SET OF 3 PAIRS) RF4026 LEECH TAILS (SET OF 3 PAIRS)

- ✔ Essential guide for proper sail trim.
- ✔ Adhesive patches for attachment to sail.
- ✔ Vivid colour fabric tails for maximum visibility; colour coded for port and starboard.
- ✔ Laser cut ripstop nylon.



RF4015



RF4015
**55-LITRE ROLL-TOP DRY
 CREW BAG**

A large, lightweight yet durable carry-all; highly water resistant, protects and keeps all your crew kit dry.

- ✓ **Weather Ready**
 Secure water-resistant zipper to main compartment with roll-top seal for additional protection from the elements. Lightweight yet durable thermoplastic polyurethane (TPU) fabric with fully welded construction.
- ✓ **Accessory-Friendly**
 2x fast access outside pockets with water resistant zippers for additional storage.
- ✓ **Travel Equipped**
 Padded carry handles with additional removable padded over-shoulder strap makes for a comfortable and versatile carry-all.
- ✓ **Outside Dimensions**
 H300mm x W800mm x D350mm
 (H12" x W31 1/2" x D14").

Note: external pocket zip is water resistant, not waterproof. Outside dimensions measured when folded 3x.



Roll-top closure



RF4014



RF4013



Adjustable padded harness



RF4012



RF4014

55-LITRE DRY BACKPACK

A rugged, highly water resistant roll-top dry bag that is loaded with practical features and big enough for all your sailing, kiting, surfing or paddling gear delivered in a smart, ergonomic backpack that makes packing and travelling a breeze.

✔ Room to Spare

A big 55-litre capacity with a large opening for ease of packing and handling.

✔ Versatile, Snug Fit

Fully padded backpack harness, padded straps, and adjustable cross-chest strap for extra comfort and fit. 4x adjustable side compression straps for attaching additional items or cinching when the bag is not full.

✔ Watertight

Light but durable TPU fabric, leak-proof welded construction with water resistant zipper and reliable fold and clip closure keeps your gear bone dry.

✔ Accessory-Friendly

Large external accessory pocket with water resistant zipper. Additional pocket inside main bag compartment for additional secure storage.

✔ Outside Dimensions

H600mm x W430mm x D270mm
(H23 1/2" x W17" x D10 1/2")

Note: external pocket zip is water resistant, not waterproof. Outside dimensions measured when folded 3x.



RF4013

30-LITRE DRY BACKPACK

The 30-litre dry backpack combines a water-resistant roll-top seal with the practical features of an ergonomic backpack that makes packing light a cinch.

✔ Versatile, Feature Packed

Light but durable TPU fabric with fully welded construction. Main compartment with roll-top, side mount closure. Includes fast access front pocket with water resistant zipper and side-mounted accessory loops.

✔ Fully-Adjustable

Fully padded backpack harness, padded straps, and adjustable cross-chest strap for comfort and fit.

✔ Notebook Friendly

Padded neoprene sleeve inside main compartment 230mm x 320mm (9" x 12 1/2").

✔ Outside Dimensions

H500mm x W300mm x D270mm
(H19 1/2" x W12" x D10 1/2").

Note: external pocket zip is water resistant, not waterproof. Outside dimensions measured when folded 3x.



RF4012

10-LITRE DRY BAG

A handy compact dry bag that is highly water resistant, the perfect size for protecting personal items.

✔ Secure

Simple, reliable fold and clip closure keeps everything dry. Removable shoulder strap.

✔ Leak-Proof Construction

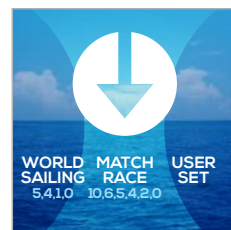
Durable TPU fabric with full welded construction. Clear window allows you to see what is inside.

✔ Outside Dimensions

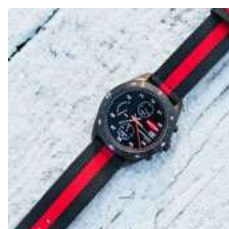
H300mm x W200mm (H12" x W8") when folded 3x.



Large quick-view displays



Selectable start sequences on digital watches



Re-synchronisation feature



Digital watches water resistant to 5ATM / 50m / 150ft



Analogue watches water resistant to 10ATM / 100m / 300ft



Mast mounting option



CLEARSTART™ WATCHES

INNOVATIVE RACE FUNCTIONS WITH BOLD STYLING

The Clearstart™ Watch range combines contemporary styling with true sailing functionality. Featuring large buttons, easy to read displays and advanced, intuitive programming, Clearstart™ Timer and Watches are specifically designed with the racing sailor in mind. Developed in collaboration with some of the world's top sailors, they set the standard on and off the water. If you're looking for that competitive edge, the difference is Clearstart™.

Big, Quick-View Displays

The digital Clearstart™ range features oversized digit displays for quick & easy viewing so that you never have to take your hand off the helm. The RF4056 Analogue Clearstart™ watch features hands with cutouts so they never hide the chronograph timers.

Water & Shock Resistant

Designed to survive the rigours of competitive sailing, digital Clearstart™ Watches and Timer are water resistant, rated at 5ATM and are highly shock-resistant. The Analogue Clearstart™ watch is also water resistant, rated to 10ATM with a hard mineral crystal lens.

DIGITAL WATCH & TIMER FUNCTIONS

Pre-programmed Race Sequence Sounds

Clearstart™ sound signals let you know exactly where you are in the start sequence without looking at the display. Pre-programmed with World Sailing 5-4-1-0 and match-racing start sequences, users can also program Clearstart™ for other count down sequences.

End of Sequence – Count Down or Count Up

Depending on the user's preference, the Clearstart™ can be set up to repeat the count down at the end of the sequence for general recall restarts, or to start counting up, to track elapsed time.

Multi-Line Display with Real-Time

No need to switch between 'count down' and 'time' modes because the actual current time is displayed below the count down time on the multi-line Clearstart™ display.

Daily Life Functionality

From waking up to working out, a Clearstart™ watch is also great for everyday activities. Standard modes include 12 or 24-hour time format, date in day/month or month/day format, daily alarm and chronograph stop watch.

Luminescent Backlight

Bright, full-face electroluminescent backlighting is easy to read at night and can be turned on temporarily for a quick view.



RF4050



RF4056

RF4050

CLEARSTART™ RACE TIMER

- ✔ 65mm (2 9/16") diameter face.
- ✔ Oversized 16mm (5/8") digit display.
- ✔ Rotating face.
- ✔ Wrist/hull/mast/boom mount options.
- ✔ 30mm (1 1/8") wide stretch nylon band with security loop.
- ✔ Flush fit buckle.
- ✔ Dual batteries.
- ✔ Extra large easy-press silicon buttons – highlighted Start/Stop button.
- ✔ Weight 92g (3.3oz).

FEATURES

RACE MODE

- ✔ Multiple start sequence options – World Sailing 5,4,1,0, match racing, user set.
- ✔ SYNChronisation function – resynchronise if you start the countdown late.
- ✔ Multi-line display – start sequence + time.
- ✔ Loud intuitive countdown and start sound signals.
- ✔ Countdown repeat, or count down and up (for elapsed race time).
- ✔ Separate fast access race and time mode scrolling.
- ✔ Water resistant to 5 ATM (50m/150ft).

RF4056

CLEARSTART™ ANALOGUE WATCH

- ✔ Analogue quartz chronograph movement.
- ✔ 43mm (1 11/16") brushed matt black stainless steel case.
- ✔ Hard mineral crystal lens.
- ✔ 12 and 24 hour time with date window.
- ✔ Stopwatch (60 sec and 10 min).
- ✔ Timer (5 minute countdown).
- ✔ Water resistant to 10 ATM (100m/300ft).
- ✔ Weight 90g (3.2oz).



RF4055



RF4055A



RF4055B

RF4055

50MM SAILING WATCHES

- ✓ Durable, ultra-clear mineral crystal lens.
- ✓ 50mm (2") diameter face.
- ✓ Oversized 13mm (1/2") digit display.
- ✓ Large easy-press buttons.
- ✓ Stainless steel buckle and security loop.
- ✓ Flexible polymer band.
- ✓ Stainless steel back.
- ✓ Weight 65g (2.3oz).

FEATURES

RACE MODE

- ✓ Multiple start sequence options – World Sailing 5,4,1,0, match racing, user set.
- ✓ SYNChronisation function – resynchronise if you start the countdown late.
- ✓ Multi-line display – start sequence + time.
- ✓ Loud intuitive countdown and start sound signals.
- ✓ Countdown repeat, or count down and up (for elapsed race time).
- ✓ Separate fast access race and time mode scrolling.
- ✓ Water resistant to 5 ATM (50m/150ft).

FEATURES

STANDARD FEATURES

- ✓ Time, hours/minutes/seconds – 12 or 24 hour format.
- ✓ Month/day or day/month format.
- ✓ Daily alarm.
- ✓ Chronograph - including hours and time of the day.
- ✓ Luminescent backlight.
- ✓ Battery saving mode – light can be turned off.
- ✓ Shock resistant.


RF4054
40MM SAILING WATCHES

- ✓ Durable, ultra-clear mineral crystal lens.
- ✓ 40mm (1 9/16") diameter face.
- ✓ Oversized 10mm (3/8") digit display.
- ✓ Recommended wrist circumference 13cm - 18.5cm (5 1/8" - 7 1/4").
- ✓ Large easy-press buttons.
- ✓ Stainless steel buckle and security loop.
- ✓ Flexible polymer band.
- ✓ Stainless steel back.
- ✓ Weight 42g (1.5oz).

FEATURES
RACE MODE

- ✓ Multiple start sequence options – World Sailing 5,4,1,0, match racing, user set.
- ✓ SYNChronisation function – resynchronise if you start the countdown late.
- ✓ Multi-line display – start sequence + time.
- ✓ Loud intuitive countdown and start sound signals.
- ✓ Countdown repeat, or count down and up (for elapsed race time).
- ✓ Separate fast access race and time mode scrolling.
- ✓ Water resistant to 5 ATM (50m/150ft).

FEATURES
STANDARD FEATURES

- ✓ Time, hours/minutes/seconds – 12 or 24 hour format.
- ✓ Month/day or day/month format.
- ✓ Daily alarm.
- ✓ Chronograph - including hours and time of the day.
- ✓ Luminescent backlight.
- ✓ Battery saving mode – light can be turned off.
- ✓ Shock resistant.