



**SPLIT RINGS**  
RF113  
RF114



**SPLIT RINGS**  
RF686  
RF687  
RF688



**RETAINING CLIP**  
RF413



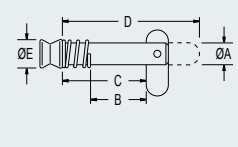
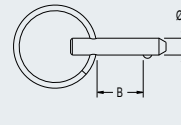
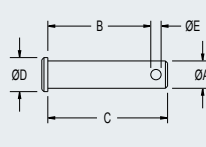
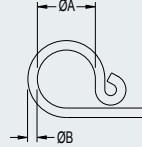
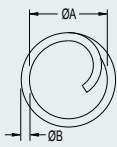
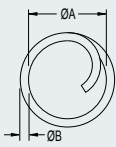
**CLEVIS PINS**



**FAST PIN**  
RF5310



**TOGGLE PINS**



PRODUCT No.	SUITS CLEVIS PINS	DESCRIPTION	A mm	B mm	WEIGHT g	A in	B in	WEIGHT oz
<b>Split Rings &amp; Clips</b>								
RF113	RF258 - RF266	Split ring	9.5	1.0	1	3/8	1/32	0.1
RF114	RF260 - RF266	Split ring	11.1	1.3	2	7/16	1/16	0.1
RF413	RF267 - RF274	Retaining clip	16.0	2.7	3	5/8	3/32	0.1
RF686	RF260 - RF274	Split ring	14.3	1.3	4	9/16	1/16	0.1
RF687	RF260 - RF274	Split ring	18.8	1.6	5	3/4	1/16	0.2
RF688	RF267 - RF278	Split ring	25.0	2.0	5	1	3/32	0.2

PRODUCT No.	A mm	B mm	C mm	D mm	E mm	WEIGHT g	A in	B in	C in	D in	E in	WEIGHT oz
<b>Clevis Pins</b>												
RF259	4.6	9.0	12.2	6.4	2.0	2	3/16	11/32	15/32	1/4	5/64	0.1
RF260	4.8	12.7	16.0	6.4	2.2	3	3/16	1/2	5/8	1/4	3/32	0.1
RF261	4.8	19.0	22.0	6.4	2.2	3	3/16	3/4	7/8	1/4	3/32	0.1
RF262	4.8	25.0	28.0	6.4	2.2	5	3/16	1	1 1/8	1/4	3/32	0.2
RF263	6.4	12.7	16.5	7.9	2.4	5	1/4	1/2	21/32	5/16	3/32	0.2
RF264	6.4	19.0	23.0	7.9	2.4	5	1/4	3/4	29/32	5/16	3/32	0.2
RF265	6.4	25.0	30.0	7.9	2.4	10	1/4	1	1 3/16	5/16	3/32	0.4
RF266	6.4	32.0	36.0	7.9	2.4	10	1/4	1 1/4	1 7/16	5/16	3/32	0.4
RF267	7.9	12.7	16.5	9.5	2.7	10	5/16	1/2	21/32	3/8	3/32	0.4
RF268	7.9	19.0	23.0	9.5	2.7	10	5/16	3/4	29/32	3/8	3/32	0.4
RF269	7.9	25.0	30.0	9.5	2.7	10	5/16	1	1 3/16	3/8	3/32	0.4
RF270	7.9	32.0	36.0	9.5	2.7	15	5/16	1 1/4	1 7/16	3/8	3/32	0.5
RF271	9.5	19.0	24.0	12.7	4.0	15	3/8	3/4	15/16	1/2	5/32	0.5
RF272	9.5	25.0	31.0	12.7	3.6	20	3/8	1	1 1/4	1/2	5/32	0.7
RF273	9.5	32.0	37.0	12.7	3.7	20	3/8	1 1/4	1 7/16	1/2	5/32	0.7
RF274	9.5	38.0	43.0	12.7	3.7	25	3/8	1 1/2	1 11/16	1/2	5/32	0.9
RF275	12.7	19.0	25.0	15.9	3.5	30	1/2	3/4	1	5/8	1/8	1.1
RF276	12.7	25.0	31.0	15.9	3.5	35	1/2	1	1 1/4	5/8	1/8	1.2
RF277	12.7	32.0	38.0	15.9	3.5	40	1/2	1 1/4	1 1/2	5/8	1/8	1.4
RF278	12.7	38.0	44.0	15.9	3.5	50	1/2	1 1/2	1 3/4	5/8	1/8	1.8
RF537	15.9	25.0	33.0	19.0	4.0	55	5/8	1	1 5/16	3/4	5/32	1.9
RF538	15.9	32.0	38.0	19.0	4.4	65	5/8	1 1/4	1 1/2	3/4	5/32	2.3
RF539	15.9	38.0	45.0	19.0	4.4	75	5/8	1 1/2	1 3/4	3/4	5/32	2.7

**Fast Pin**

RF5310	4.8	12.5	-	-	-	7	3/16	1/2	-	-	-	0.2
--------	-----	------	---	---	---	---	------	-----	---	---	---	-----

**Toggle Pins**

RF115 x 1/2	6.4	7.8*	17.4	32.5	7.9	10	1/4	5/16*	11/16	1 9/32	5/16	0.4
RF115 x 5/8	6.4	11.2*	20.8	35.9	7.9	10	1/4	7/16*	13/16	1 13/32	5/16	0.4
RF115 x 3/4	6.4	14.2*	23.8	38.9	7.9	10	1/4	9/16*	15/16	1 17/32	5/16	0.4
RF115 x 1	6.4	20.5*	30.1	45.2	7.9	10	1/4	13/16*	1 1/8	1 25/32	5/16	0.4
RF115 x 1 1/4	6.4	27.1*	36.7	51.8	7.9	13	1/4	1 1/16*	1 7/16	2	5/16	0.5

\*Maximum thickness of material the toggle pin can pass through, allowing correct toggle operation.