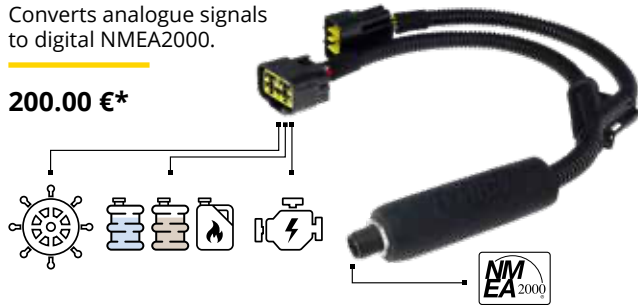


### SmartEMU

Converts analogue signals to digital NMEA2000.

200.00 €\*  

---



### SmartFLC

Fluid level converter to NMEA2000.

from  
90.00 €\*  

---



### Honda NMEA2000 1m & T-Connector

Also available: 3 & 6 m

from  
45.00 €\*  

---



### Yamaha NMEA 2000 1 m

Also available: 3 & 6 m

from  
32.00 €\*  

---

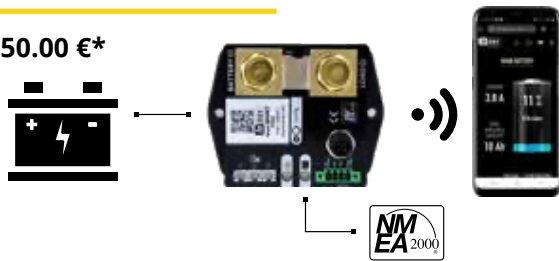


### SmartSHUNT

Monitoring or configuration can be done through integrated Wi-Fi via smartphone or any NMEA2000 device.

250.00 €\*  

---



\*€ ex.VAT

## CHARTPLOTTERS



E350 | 790.00 €\*  

---



E700 | 770.00 €\*  

---



E900 | 990.00 €\*  

---



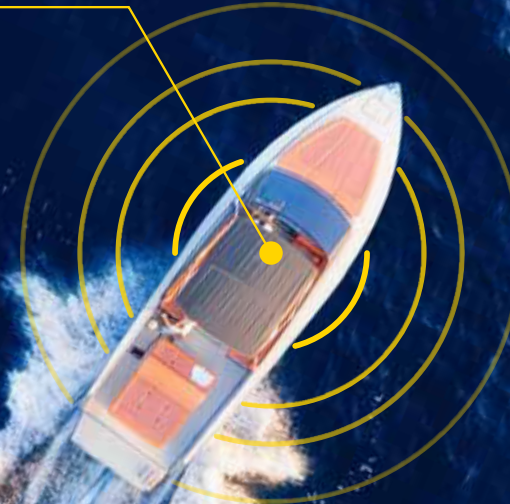
LXNAV d.o.o., Kidričeva 24, SI-3000 Celje, Slovenia EU  
+386 592 33 400 | info@lxnav.com | marine.lxnav.com | shop.lxnav.com

INTUITIVE.  
IN EVERY WAY.



# SMARTGPS

Low Fuel



GPS antenna

## VESSELS SMART TRACKING DEVICE

GPS DATA AND ALL DATA FROM THE NMEA2000 NETWORK

# DEVICE FUNCTIONS

**LIVE TRACKING**  
(no delay)



**MULTIPLE VESSELS MONITORING**



**COMPLETE TRACKING HISTORY**

**Start**  
Cruise, Sea, 1000 meters, 0km  
08.04.21 - 08.02

**8:50**  
Cruise, Sea, 1000 meters, 0km  
08.04.21 - 08.02  
08.04.21 - 08.02  
08.04.21 - 08.02

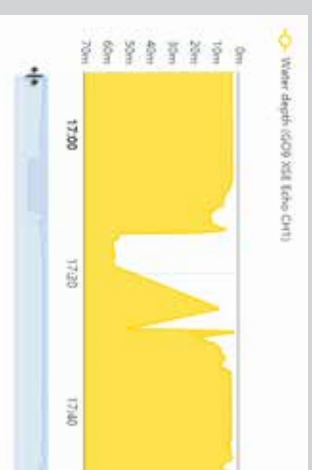
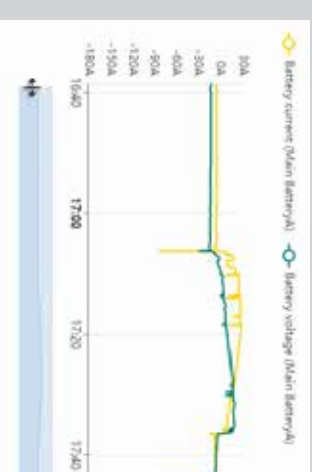
**9:44**  
Overst. Cruise, 1000 meters, 0km  
08.04.21 - 08.02

**End**  
Cruise, 1000 meters, 0km  
08.04.21 - 08.02

**Statistics**

- 5200**  
Occured at 8:44  
Maximum engine RPM
- 51km/h**  
Occured at 8:50  
Maximum speed
- 0.90m**  
Occured at 10:00  
Maximum water depth
- 59km**  
Distance
- 37.1l**  
Fuel used

**CUSTOMIZABLE CHARTS FOR ALL DATA FROM THE NMEA2000 NETWORK**



- GPS position
- Speed
- Course
- Engine speed
- Fuel consumption
- Engine oil pressure
- Engine oil temperature
- Engine temperature
- Fuel pressure
- Engine temperature
- Depth
- Sea temperature
- Fuel level
- Level of other fluids
- Battery voltage
- Battery current
- Battery housing temperature
- Battery capacity