

## Acoustic and optical signalling - TECHNICAL CHARACTERISTICS

### Prismatic indicator units

#### Technical specifications

- for E10 10x28 mm, 14770, 14771, 14776 and 14777 lamps

#### Technical specifications of lamps

Article	Type	Voltage	W	Colour
14778	neon	110 V~	0,5 W max	red
14779	neon	230 V~	0,5 W max	red
14770	incandescence	12 V~	3 W max	white
14771	incandescence	24 V~	3 W max	white
14774	incandescence	12 V~	0,6 W max	white
14775	incandescence	24 V~	1,2 W max	white
14776	incandescence	130 V~	2,6 W max	white
14778	incandescence	230 V~	3 W max	white

#### Conformity to Standards

LV Directive  
EN 62094-1 Standard

### 14381 - Step marker lamps with LED

#### Scope

- Localized lighting of floors, steps, stairs.
- bed-head courtesy light

#### Technical specifications

- supply voltage:
  - **14381**: 230 V~;
  - **14381.012**: 12 V~ or 12 V d.c. (SELV)
- LED appliances of class 1
- High-efficiency LED with luminous flux: 3 lumen
- homogenous luminous beam
- high-resistance to impact
- Class II appliances
- installable also on normally inflammable surfaces

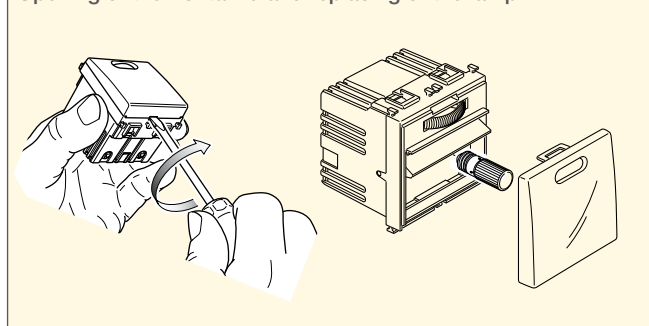
#### 14381 - Conformity to Standards

LV Directive; EMC Directive  
EN60598-1, EN 60598-2-2, EN 60825-1 Standards  
EN 61547, EN 61000-3-2, EN 61000-3-3, EN 55015 Standards

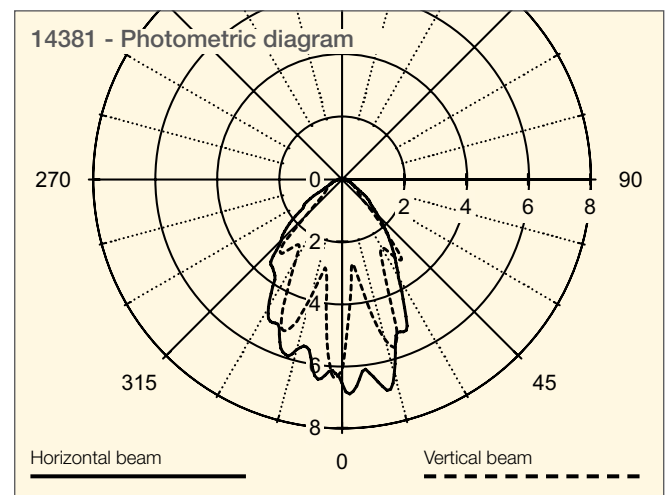
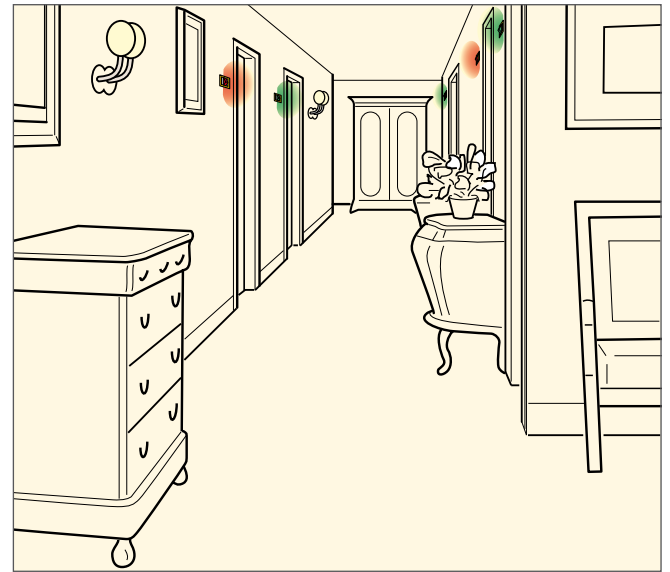
#### 14381.012 - Conformity to Standards

EN 60598-1, EN 60598-2-2, EN 60825-1 Standards  
EN 61547, EN 55015 Standards  
EMC Directive

#### Opening of the frontal lid and replacing of the lamp



#### Example of use



### 14390 - Step marker lamp

#### Scope

- localized lighting of floors, steps, stairs
- bed-head courtesy light

#### Technical specifications

- for 14770, 14771, 14776 and 14777 lamps
- internal movable shade to direct the light beam, driven by two front wheels
- uniform light beam
- high resistance to impacts

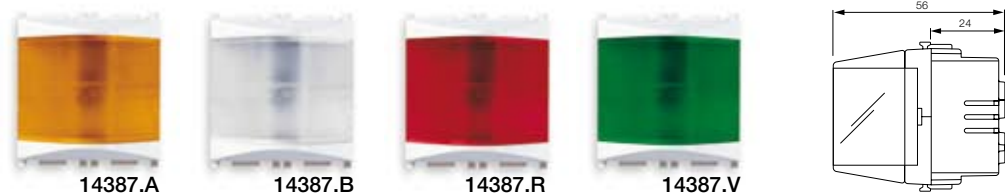
#### Conformity to Standards

LV Directive

## Acoustic and optical signalling

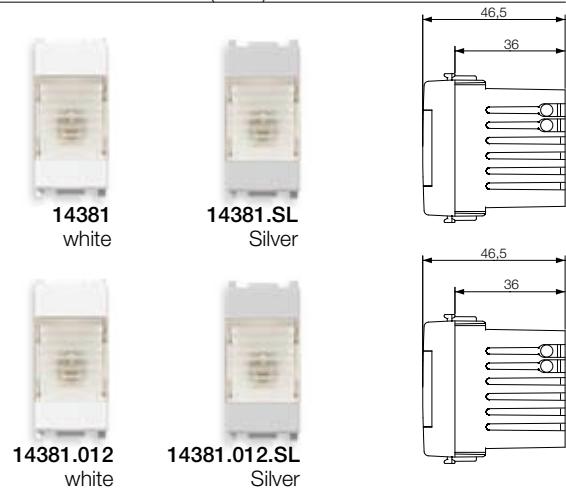
### Prismatic indicator unit

<b>14387.A</b>	Prismatic indicator unit, supply voltage 230 V~ 3 W max for 14770, 14771, 14776 and 14777 lamps, orange diffuser - 2 modules. Supplied without lamp
<b>14387.B</b>	As above, white diffuser
<b>14387.R</b>	As above, red diffuser
<b>14387.V</b>	As above, green diffuser



### Step marker lamp with LED

<b>14381 .SL</b>	Step marker lamp with high-efficiency LED, supply voltage 230 V~ 50-60 Hz
<b>14381.012 .SL</b>	Step marker lamp with high-efficiency LED, supply voltage 12 V~ 50-60 Hz or 12 V d.c. (SELV)



### Step marker lamp

<b>14390</b>	Step marker lamp, 230 V~ 3 W max, with adjustable beam, for 14770, 14771, 14776 and 14777 lamps, white diffuser - 2 modules. Provided without lamp
--------------	---

