

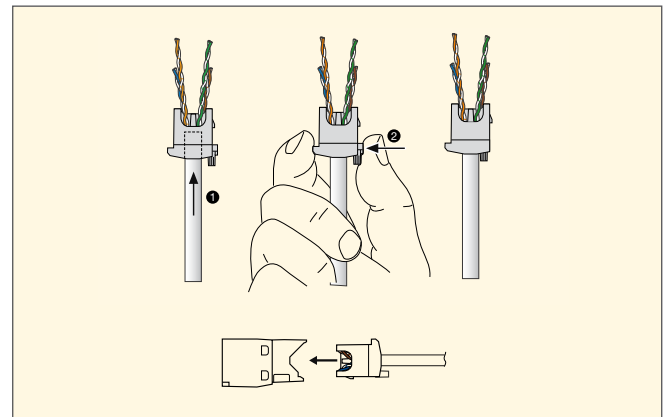
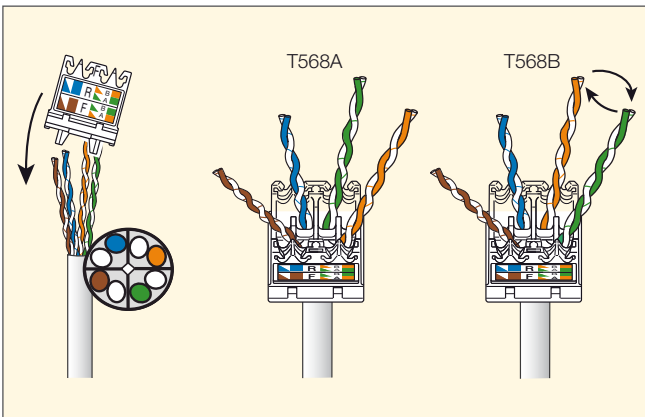
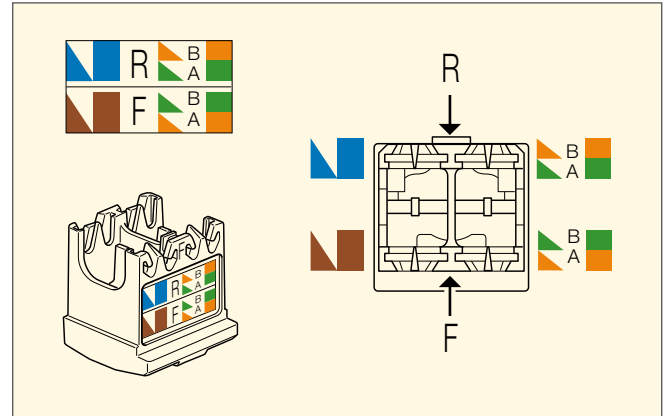
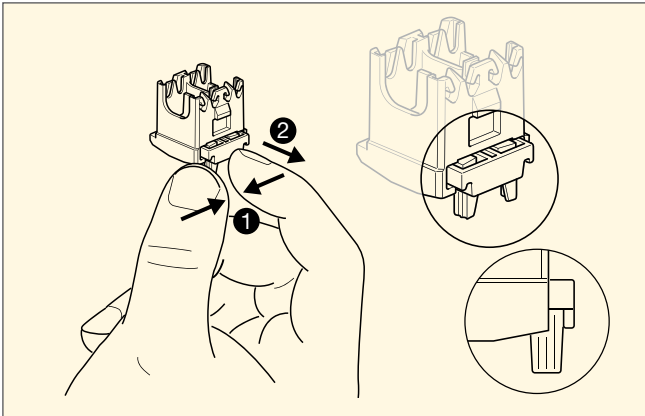
Signal reception socket outlets - TECHNICAL CHARACTERISTICS

EDP socket connectors

Scope

Devices designed to realize information or telephone networks.

14340.1 and 14340.2 cabling code



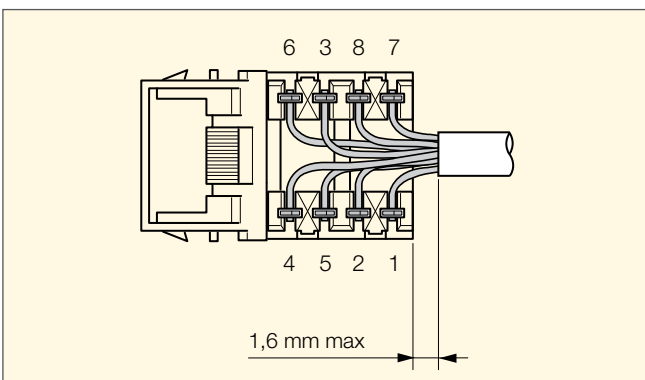
14338.1 cabling code

T568A

- 1: White/Green
- 2: Green
- 3: White/Orange
- 4: Blue
- 5: White/Blue
- 6: Orange
- 7: White/Brown
- 8: Brown

T568B

- 1: White/Orange
- 2: Orange
- 3: White/Green
- 4: Blue
- 5: White/Blue
- 6: Green
- 7: White/Brown
- 8: Brown



Signal reception socket outlets

EDP socket connector

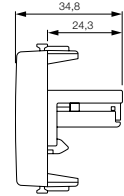
14340.1	.SL	RJ45 outlet with Panduit (MINI-COM) connector, Cat. 5e, unshielded, T568A/B universal wiring, 8 contacts, insulation-piercing terminals
14340.2	.SL	RJ45 outlet with Panduit (MINI-COM) connector, Cat. 5e, shielded, T568A/B universal wiring, 8 contacts, insulation-piercing terminals



14340.1
white



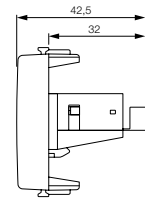
14340.1.SL
Silver



14340.2
white



14340.2.SL
Silver



EDP socket connector

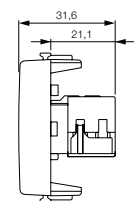
14338.1	.SL	RJ45 outlet with AT&T/Lucent Technologies/Avaya (MPS100E) connector, Cat. 5e, unshielded, T568A/B universal wiring, 8 contacts, insulation-piercing terminals
14338.3	.SL	RJ45 outlet with AMP/Tyco Toolless Jack connector, Cat. 5e, unshielded, T568A/B universal wiring, 8-contacts, insulation-piercing terminals
14338.4	.SL	RJ45 outlet with AMP/Tyco Toolless Jack connector, Cat. 5e, shielded, T568A/B universal wiring, 8-contacts, insulation-piercing terminals



14338.1
white



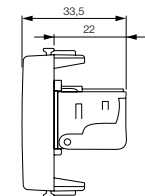
14338.1.SL
Silver



14338.3
white



14338.3.SL
Silver



14338.4
white



14338.4.SL
Silver

