

RJ45 Cat. 5e socket connectors - TECHNICAL CHARACTERISTICS

RJ45 Cat. 5e UTP socket connectors

Scope

Creation of workstations aesthetically coordinated with the electrical system present in the room.
Devices may be installed using the corresponding racks and cover plates, in the same way as for the other equipment of the series:

- Eikon: 20338.8, 20338.9, 20339.4
- Idea: 16358.8, 16358.9, 16359.4
- Plana: 14338.8, 14338.9, 14339.4
- 8000: 08458.8, 08458.9, 08459.4

Supported applications

- 25/52/155 Mbps ATM
- TP-PDM
- Ethernet (10BASE-T)
- Fast Ethernet (100BASE-TX)
- Gigabit Ethernet (1000BASE-T)
- 4/16/100 Mbps Token Ring
- 5, 5e or D class category

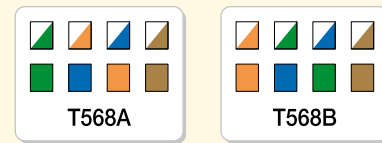
Technical specifications 20338.8, 16358.8, 14338.8, 08458.8

- category 5e performance;
- termination cap:
 - colour-coded to reduce mismatched wiring
 - snap-lock to ensure wires are fully terminated, to eliminate wire slippage and provide strain relief
- transmission performance comply with Standards: ANSI/TIA/EIA 568B for 5e category and ISO/IEC 11801 and CEI EN 50173 for 5 category

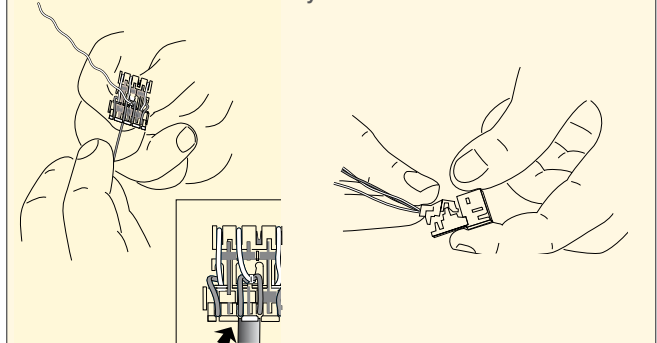
Technical specifications 20338.9, 16358.9, 14338.9, 08458.9

- category 5e performance;
- termination cap:
 - colour-coded to reduce mismatched wiring
 - snap-lock to ensure wires are fully terminated, to eliminate wire slippage and provide strain relief
- transmission performance comply with Standards: ANSI/TIA/EIA 568B for 5e category and ISO/IEC 11801 and CEI EN 50173 for 5 category

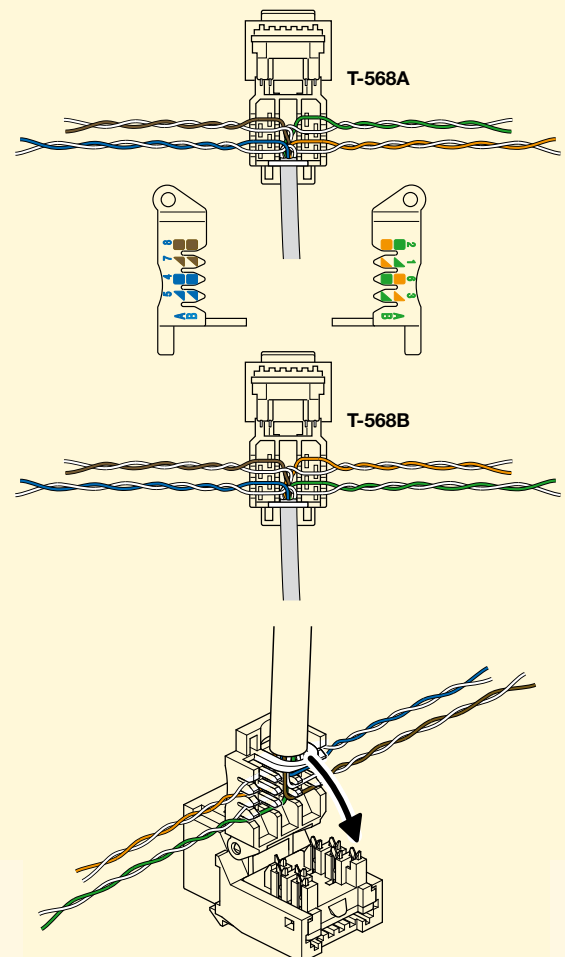
RJ45 Cat. 5e UTP - Colour code



RJ45 Cat. 5e UTP - Assembly



20338.9, 16358.9, 14338.9, 08458.9



RJ45 Cat. 5e socket connectors

RJ45 Cat. 5e UTP socket connector

RJ45 Cat. 5e socket connector, unshielded, T568A/B universal wiring, 8-contact, insulation-piercing terminals without tool use

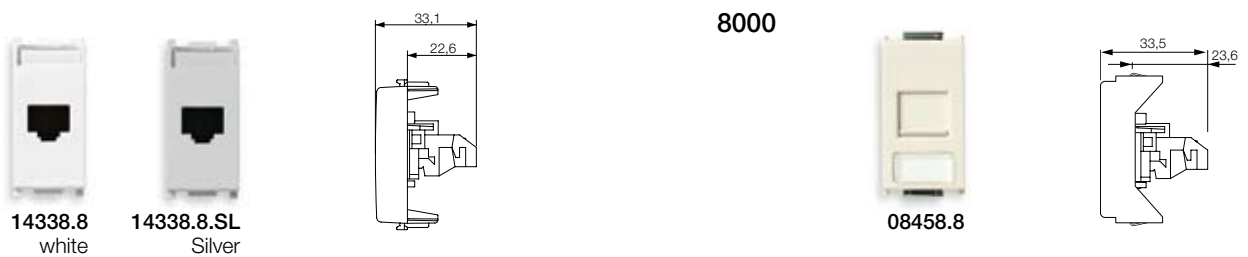
EIKON



IDEA



PLANA



RJ45 Cat. 5e UTP socket connector

RJ45 Cat. 5e socket connector, unshielded, T568A/B universal wiring, 8-contact, insulation-piercing terminals without tool use

EIKON



IDEA



PLANA

