

Acoustic and optical signalling - TECHNICAL CHARACTERISTICS

TORCIA, electronic hand lamp

Miniaturized electronic equipment sized 2 modules, formed by a fixed charge part and a removable part:

- 2P 10 A 250 V~ charging socket (fixed part flush mounted)
- TORCIA (removable part).

Two possibilities of use:

- as auxiliary lighting in case of mains failure, when inserted into the charging socket
- as ordinary rechargeable hand lamp, when removed from the socket outlet

The removable part can be plugged for recharge, either into the relevant charging socket, or into P10, P11, P17/11 Italian standard socket outlets and other sockets suitable for receiving plugs with \varnothing 4 mm pins and 19 mm distance between centres - VIMAR patent.

Operating

When the electronic TORCIA is inserted into the charging socket, it also operates as auxiliary lighting in case of blackout.

The recharge can be made as follows:

- recharge with auxiliary lighting function disconnected: slide switch in position "0" and red LED on; if the current supply is interrupted the TORCIA will not light on
- recharge with auxiliary lighting function connected: slide switch in position "I" and green LED on; if the current supply is interrupted the TORCIA will light on and automatically light off when the supply is restored.

Technical specifications

- supply voltage:
 - **16450**: 230 V~ 50-60 Hz
 - **16449**: 120 V~ 50-60 Hz
- rechargeable and replaceable battery: 4-element Ni-MH 4,8 V 80 mAh
- battery recharging time: 48 h
- operating range after recharge: 2 h approximately
- white high-efficiency LED with built-in narrow angle lens; d.c. voltage ensures a constant output for the duration of the charge
- slide switch to light on and off the TORCIA when used as a portable lamp or to connect and disconnect the auxiliary lighting function
- 2-color LED, red and green to indicate respectively the disconnection and connection of the auxiliary lighting function
- possibility of locking the device by means of the supplied screw, which must be inserted from reverse side of the recharging socket and tightened
- Operating temperature: between 0° C and +40° C

Conformity to Standards

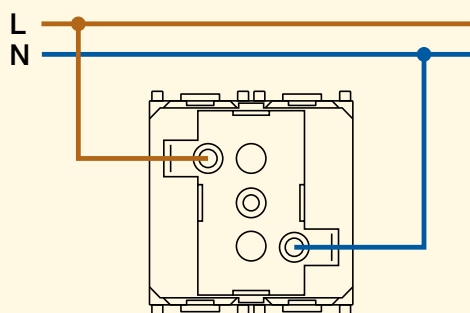
LV Directive

EN 60598-1, EN 60598-2-2, EN 60825-1 Standards

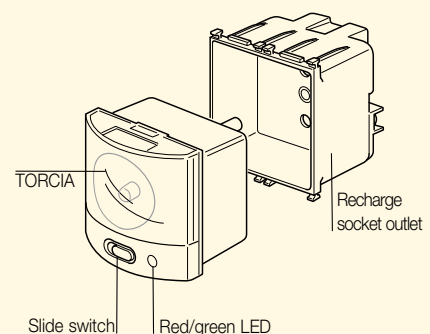
EMC Directive

EN 61547, EN 61000-3-2, EN 61000-3-3, EN 55015 Standards

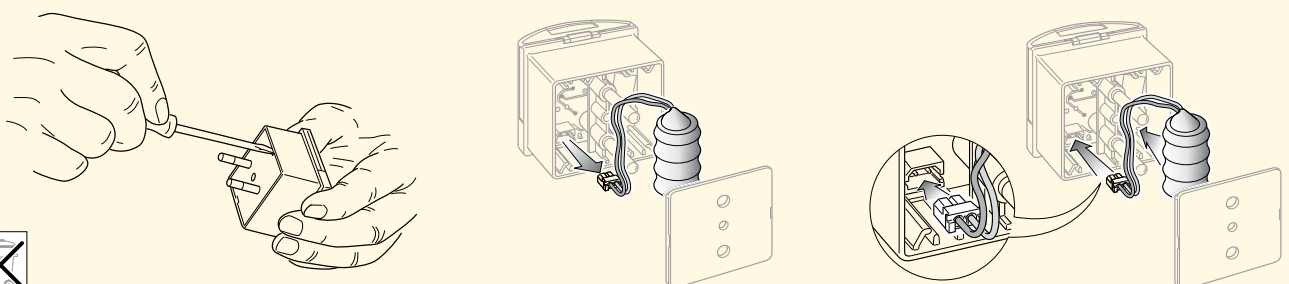
Wiring diagram



TORCIA and recharge socket outlet



Battery replacing



Acoustic and optical signalling

TORCIA, electronic hand lamp 230 V~

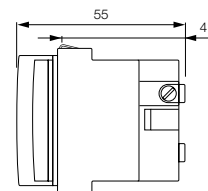
16450 .B TORCIA, electronic hand lamp with high-efficiency LED, supply voltage 230 V~ 50-60 Hz, automatic emergency device, rechargeable and replaceable Ni-MH battery, 2 hours of operating range, ø 4 mm pins, 19 mm distance between centres + charging socket outlet - 2 modules



16450
grey



16450.B
white



TORCIA, electronic hand lamp 120 V~

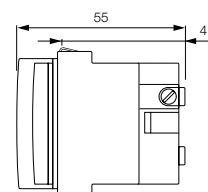
16449 .B TORCIA, electronic hand lamp with high-efficiency LED, supply voltage 120 V~ 50-60 Hz, automatic emergency device, rechargeable and replaceable Ni-MH battery, 2 hours of operating range, ø 4 mm pins, 19 mm distance between centres + charging socket outlet - 2 modules



16449
grey



16449.B
white



Rechargeable battery

00910 Ni-MH 4,8 V 80 mAh rechargeable battery, spare part for TORCIA



00910

Switches

Step marker lamp with mounting frame and cover plate for 3-module mounting boxes

08689	Step marker lamp with 3 lampholders for 12 or 24 V 3 W \varnothing 7x31 mm lamp, grid diffuser - provided with mounting frame and anodized aluminium cover plate, snap fixing, gold. Supplied without lamp
08689.BR	As above, anodized aluminium, bronze
Δ 08689.N	As above, anodized aluminium, black
08689.A	As above, resin, ivory
Δ 08689.Z	As above, resin, white
Δ 08589	Step marker lamp with 3 lampholders for 12 or 24 V 3 W \varnothing 7x31 mm lamp, grid diffuser - provided with mounting frame and anodized aluminium cover plate, screw fixing, gold. Supplied without lamp
Δ 08589.BR	As above, anodized aluminium, bronze
Δ 08589.N	As above, anodized aluminium, black

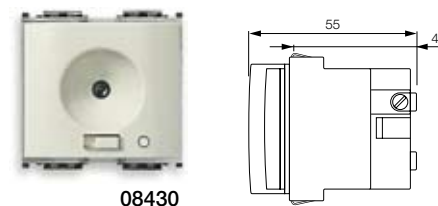
Technical specifications: see page 184



TORCIA, electronic hand lamp

08430	TORCIA, electronic hand lamp with high-efficiency LED, supply voltage 230 V~ 50-60 Hz, automatic emergency device, rechargeable and replaceable Ni-MH battery, 2 hours of operating range, \varnothing 4 mm pins, 19 mm distance between centres + charging socket outlet - 2 special modules NOT suitable for 08691... and 08591... It can be plugged for recharge also into any socket outlet for plugs with \varnothing 4 mm pins, 19 mm distance between centres
--------------	---

Technical specifications: see page 190



Protection device

08370	1P 16 A 250 V~ fuse carrier, for \varnothing 5x20 mm and \varnothing 6,3x32 mm miniature fuses. Supplied without fuse
Δ 08375	SCUDO, transient voltage suppressor
08376	SCUDO, transient voltage suppressor with fuse protection and blow-out indicator

Technical specifications: see page 194

