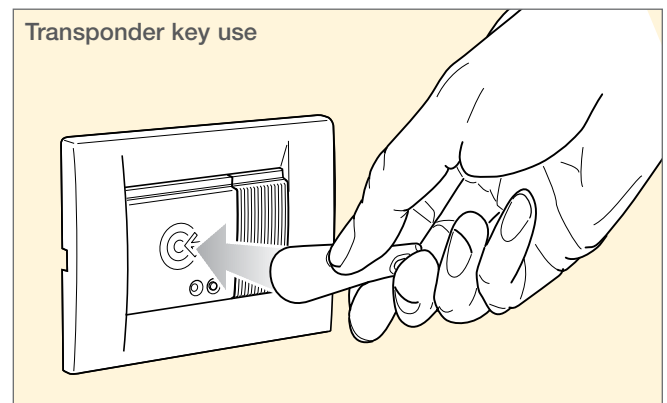


## BUS access control - TECHNICAL CHARACTERISTICS

### Transponder key

The transponder key (01815), require no maintenance and no batteries. Its size is like a key ring, whose function in the access control system is to open through the activator the electric lock of the doors.

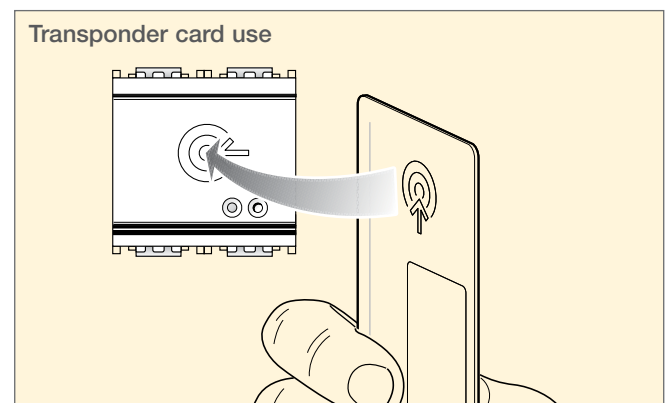


### 01816 - Transponder card

The same function are available using the transponder card (01816) sized as an ISO-card. Customizable in black and white in the rear side.

### 01816.H - Customizable transponder card

As for 01816, but customizable on request

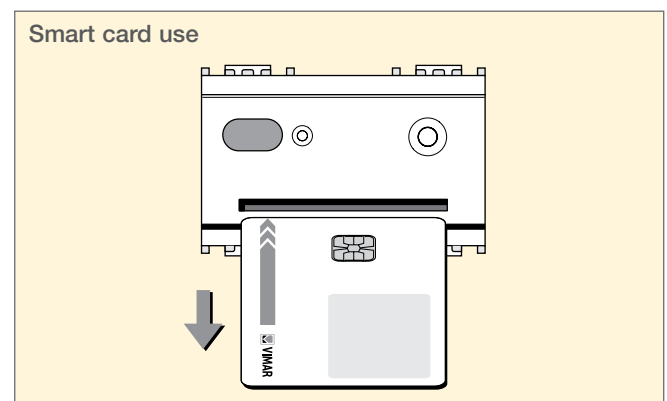


### 16452 - Smart card

- storing of 15 different codes in 15 different memory addresses
- 4.29 billions of combinations
- Writable area for customization

### 16452.H - Customizable smart card

As for 16452, but customizable on request



### 01800 - Power supply unit

This device supplies 29 V d.c. to power BUS system. A power supply unit supplies 10 readers and 10 actuators.

### Technical specifications

- Switching type
- rated voltage: 120-230 V~
- rated supply frequency: 50-60 Hz
- output voltage: 29 V d.c.
- max output current: 320 mA
- operating temperature: -5 - +45 °C
- mounting: on EN 50022 rail installation (6 17,5 mm modules)

### Conformity to Standards

LV Directive, EMC Directive  
EN 60950-1, EN 50130-4, EN 61000-6-3 Standards

### 01842 - Decoupling coil

This device enables the communication between power supply unit and the BUS connected devices.

### Technical specifications

- on EN 50022 rail installation (2 17,5 mm modules)

### Conformity to Standards

EMC Directive  
EN 61000-6-1, EN 61000-6-3 Standards

## BUS access control

### Transponder key/card

<b>01815</b>	Transponder key. No needed batteries
<b>01816</b>	Transponder card
<b>01816.H</b>	Customizable transponder card



01815



(front)

01816



(rear)

01816.H

### Smart card

<b>16474</b>	Smart card for reader/programmer serial connection
<b>16452</b>	Programmable smart card
<b>16452.H</b>	Customizable and programmable smart card



16474



(front)

16452



(rear)

16452.H

### Devices for EN 50022 rail installation

<b>01800</b>	Power supply unit with 29 V d.c. 320 mA output, supply voltage 120-230 V~ 50-60 Hz, on EN 50022 rail installation, occupies 6 17,5 mm modules - RAL 7035 grey
<b>01842</b>	Decoupling coil, on EN 50022 rail installation, occupies 2 17,5 mm modules - RAL 7035 grey



01800



01842