

## Devices - TECHNICAL CHARACTERISTICS

### Activator

The activator/partialiser is the device that receives the code emitted by the transponder keys or cards and, according to the configuration assigned in the control unit, activates and deactivates the system based on associating the areas into which the system is divided.

### Technical specifications

- rated voltage (Vn): BUS 20-30 V d.c.
- protection degree: IP30
- operating temperature: -5 - +45 °C (for indoor)
- installation: flush or surface mounting (with 09975...)
- protection type: against opening and removal, with built-in optic tamperproof device
- absorption: 10 mA
- BUS connection terminals (+ and -).
- switching on and off of the system through a transponder key or card coded with more of 1000 billion possible combinations.
- recognizes attempts to use false keys.
- reads the code belonging to the transponder key or card.
- if the option 'Additional key' is activated in the control unit, the code is saved by the activator and notified to the control unit.
- in normal operating, checks the key code and sends it to the control unit.

### Conformity to Standards

EMC Directive,  
EN 50130-4, EN 61000-6-3 Standards

### Transponder key and card

Transponder keys (01815) operate without batteries and thus have unlimited autonomy, is maintenance-free, their function is the same of the remote controls.

Every keys is provided of a sole and different code (1000 billions of possible combinations), and depending on the configuration assigned to the activator, the key switches on/off or partializes the system.

The transponder keys are closely related to the activator, which, in configuration mode, memorizes the transponder key codes and notifies to the control unit for recognition.

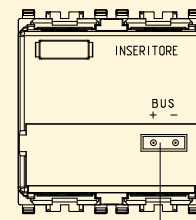
### 01816 - Transponder card

The same functions for transponder card (01816), sized as an ISO-card.

### 01816.H - Customizable transponder card

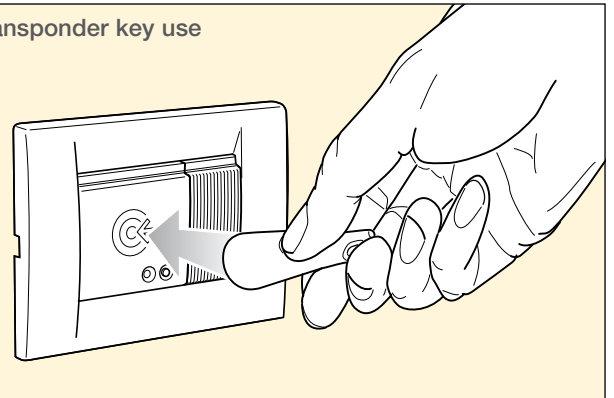
- As for 01816, rear side customizable on request

### Connections

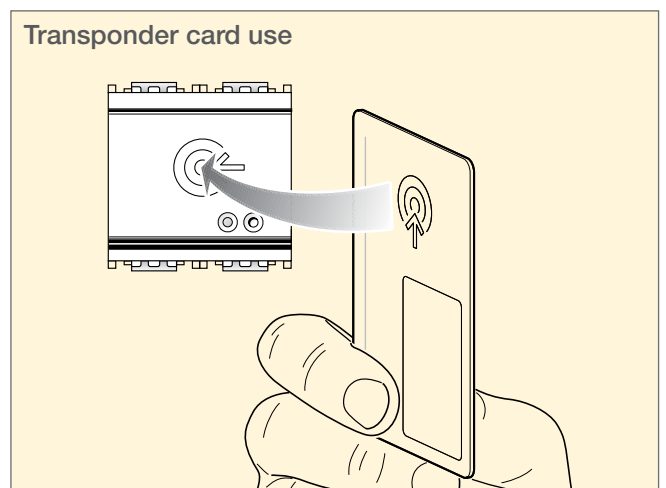


terminals  
BUS TP

### Transponder key use



### Transponder card use



## Activator

Activator/partialiser - 2 modules

### EIKON



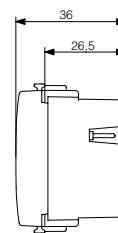
**20482**  
grey



**20482.B**  
white



**20482.N**  
Next



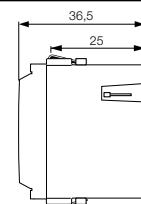
### IDEA



**16932**  
grey



**16932.B**  
white



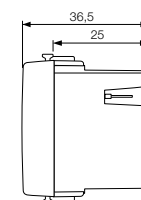
### PLANA



**14482**  
white



**14482.SL**  
Silver



## Transponder key

**01815** Transponder key. No needed batteries



**01815**

## Transponder card

**01816** Transponder card

**01816.H** Transponder card, customizable



(front)

**01816**



(rear)

**01816.H**