

Gebo Portlights



GEBO portlights are made from anodised aluminium and have a standard Smoke Grey acrylic sheet of 10mm thickness. All parts are constructed from non-corrosive materials.

Powder-coating of the frame to any RAL colour you specify is also available. As standard the hatch is being manufactured with grey smoke acrylic. Clear, bronze and green acrylic are available to special order.



Gebo Portlights



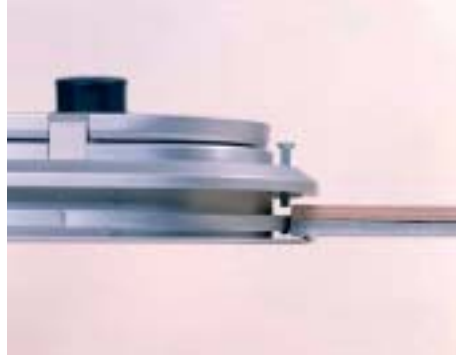
WATERTIGHT DESIGN



Unlike many designs, Gebo portlights are designed for watertight hull fitting, so there's no problem when a heeling yacht places the portlight against the pressure of fast-running water.

EASY INSTALLATION... AND NO HOLE DRILLING

Each Gebo portlight is supplied with an aperture template to aid fitting. There are no holes to drill as the Gebo's unique clamp system provides a perfect fit. You simply apply sealant between portlight and hull, then screw the inner rim onto the back of the outer frame from the inside. Both rim and frame are pre-drilled. Gebo clamp system portlights are suitable for wall thickness of 4 to 23 mm.



FRICITION HINGE

The Gebo's friction hinge firmly fixes the portlight in any position without the need for stays.

NON-DRIP DESIGN

The smooth angled outer frame prevents water from collecting on the frame and dripping into your cabin when the portlight is opened.

Optional quick-fit stainless steel mosquito screens can be supplied for most standard sizes.



The following pages will inform you about our Gebo portlights:

- **Standard (rectangular) portlight, page 16 and 17.**
- **Circular ended portlights pages 18 and 19.**
- **Round and Elliptical portlights, page 20.**
- **Flushline portlights, page 21.**
- **Econoline portlights, page 22 and 23.**





Portlights Rectangular



**Simple
installation:
no hole drilling**

COLOUR OF THE ACRYLIC

As standard the portlight is being manufactured with grey smoke acrylic. Clear, bronze and green acrylic are available to special order.

dripping into your cabin when the portlight is opened.

Optional quick-fit stainless steel mosquito screens can be supplied for most standard sizes.

no problem when a heeling yacht places the portlight against the pressure of fast-running water.

NON-DRIP DESIGN

The smooth angled outer frame prevents water from collecting on the frame and

WATERTIGHT DESIGN

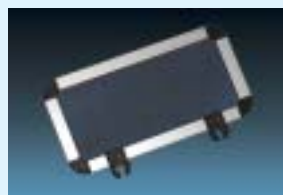
Unlike many designs, Gebo portlights are designed for watertight hull fitting, so there's

CATEGORY:
A + B + C + D
AREA I
See page 37

Accessories



Portlight Rectangular



Mosquito screen



Rainshield





■ Unique labour saving clamp fitting system.

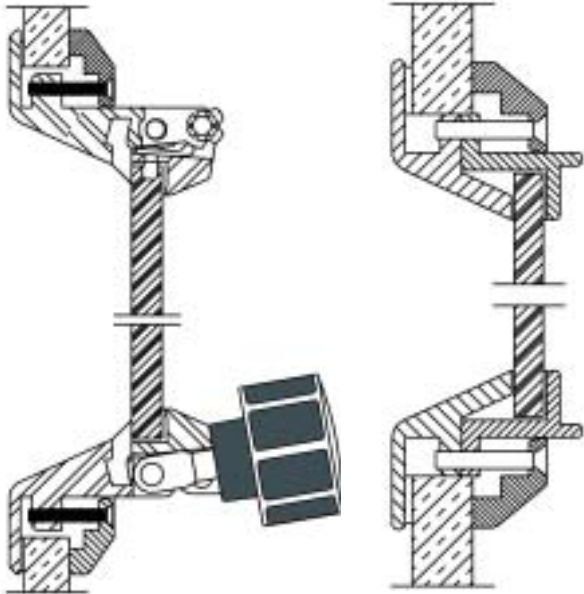


■ Unique three-point hinge for easier opening.



■ Non-drip frame design.

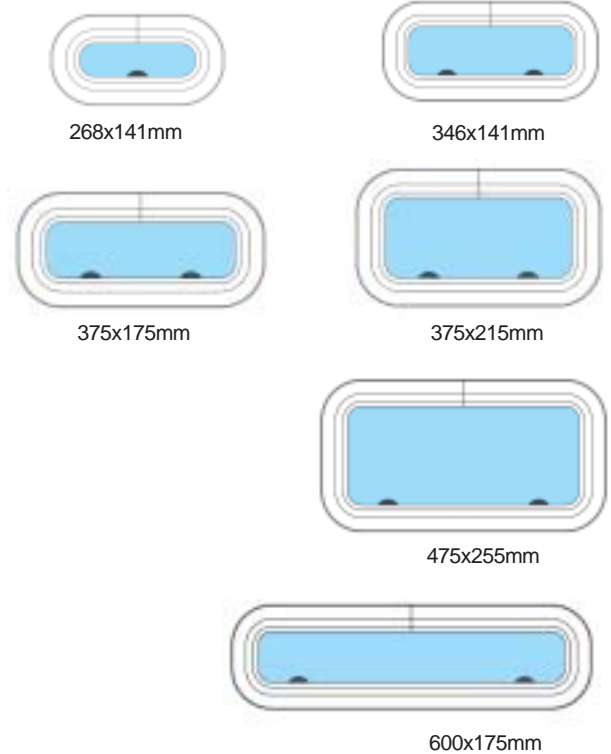
Portlights - Rectangular



Opening

Fixed

Portlights, rectangular - sizes



Portlights should be fitted to a flat surface with a maximum tolerance of 1mm.

PORTLIGHTS RECTANGULAR - SPECIFICATIONS

Art.No.	Cut-Out size L x B	Radius	Overall size L x B	Radius	Glass - see through	Mosquito screen	Rainshield
81.00.10.00 Opening	268x141mm	56	293x166mm	68	203x76mm	84.75.00.01	
81.00.55.00 Opening	346x141mm	56	371x166mm	68	281x76mm	84.75.00.02	
81.00.20.00 Opening	375x175mm	56	400x200mm	68	310x110mm	84.75.00.03	84.85.00.03
81.00.29.00 Opening	375x175mm black	56	400x200mm	68	310x110mm	84.75.00.03	84.85.00.03
81.00.30.00 Opening	375x215mm	56	400x240mm	68	310x150mm	84.75.00.04	84.85.00.04
81.00.30.01 Opening	375x215mm black	56	400x240mm	68	310x150mm	84.75.00.04	84.85.00.04
81.00.40.00 Opening	475x255mm	56	500x280mm	68	410x190mm	84.75.00.05	84.85.00.05
81.00.85.00 Opening	600x175mm	56	625x200mm	68	535x110mm	84.75.00.06	84.85.00.06
81.10.11.00 Fixed	268x141mm	56	293x166mm	68	213x86mm		
81.10.55.00 Fixed	346x141mm	56	371x166mm	68	291x86mm		
81.10.21.00 Fixed	375x175mm	56	400x200mm	68	320x120mm		
81.10.21.01 Fixed	375x175mm black	56	400x200mm	68	320x120mm		
81.10.31.00 Fixed	375x215mm	56	400x240mm	68	320x160mm		
81.10.31.01 Fixed	375x215mm black	56	400x240mm	68	320x160mm		
81.10.41.00 Fixed	475x255mm	56	500x280mm	68	420x200mm		
81.10.86.00 Fixed	600x175mm	56	625x200mm	68	545x120mm		





Portlights Circular Ended



**Simple
installation:
no hole drilling**

GEBO portlights are made from anodised aluminium and have a standard Smoke Grey acrylic sheet of 10mm thickness. All parts are constructed from non-corrosive materials. As standard the portlight is being manufactured with grey smoke acrylic. Clear,

bronze and green acrylic are available to special order.

NON-DRIP DESIGN

The smooth angled outer frame prevents water from collecting on the frame and dripping into your cabin when the portlight is opened.

WATERTIGHT DESIGN

Unlike many designs, Gebo portlights are designed for watertight hull fitting. So there's no problem when a heeling yacht places the portlight against the pressure of fast-running water.

CATEGORY:
A + B + C + D

See page 37

Accessories



Portlight Circular Ended



Mosquito screen



Rainshield





■ Unique labour saving clamp fitting system.

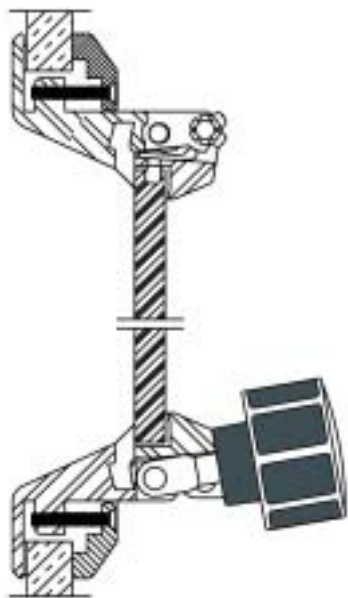


■ Unique three-point hinge for easier opening.

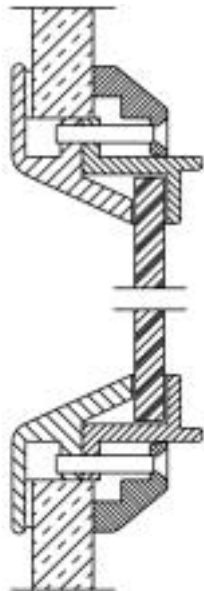


■ Non-drip frame design.

Portlights- Circular Ended



Opening

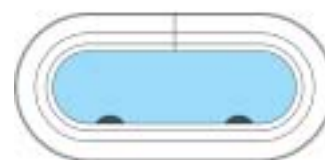


Fixed

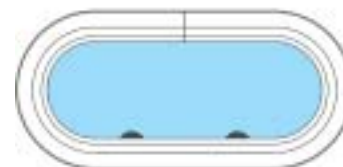
Portlights Circular Ended - sizes



375x141mm



375x175mm



483x229mm



600x175mm

Portlights should be fitted to a flat surface with a maximum tolerance of 1mm.

PORTLIGHTS CIRCULAR ENDED - SPECIFICATIONS

Art.No.	Cut-Out size L x B	Radius	Overall size L x B	Radius	Glass - see through	Mosquito screen	Rainshield
81.00.10.05 Opening	375x141mm	71	400x166mm	83	310x76mm	84.75.00.08	
81.00.20.05 Opening	375x175mm	88	400x200mm	100	310x110mm	84.75.00.09	84.85.00.09
81.00.20.09 Opening	375x175mm black	88	400x200mm	100	310x110mm	84.75.00.09	84.85.00.09
81.00.61.00 Opening	483x229mm	114	508x324mm	126	418x164mm	84.75.00.10	84.85.00.10
81.00.85.05 Opening	600x175mm	88	625x200mm	100	535x110mm	84.75.00.16	84.85.00.16
81.10.21.05 Fixed	375x175mm	88	400x200mm	100	320x120mm		
81.10.21.09 Fixed	375x175mm black	88	400x200mm	100	320x120mm		
81.10.85.05 Fixed	600x175mm	88	625x200mm	100	545x120mm		





Portlights Round and Elliptical



Portlights, round - sizes



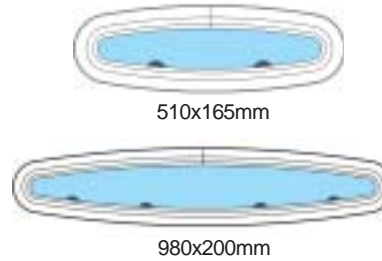
Accessories



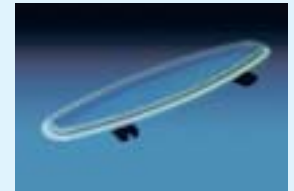
Mosquito screen



Portlights, elliptical - sizes



Accessories



Mosquito screen

CATEGORY:
A + B + C + D
AREA III
 See page 37

Portlights should be fitted to a flat surface with a maximum tolerance of 1mm.

PORTLIGHTS ROUND & ELLIPTICAL - SPECIFICATIONS

Art.No.	Cut-Out size Diameter	Radius	Overall size Diameter	Radius	Glass - see through	Mosquito screen
Portlights Round:						
81.00.75.00 Opening	175mm		200mm		110mm	84.75.00.11
81.00.81.00 Opening	198mm		223mm		133mm	84.75.00.12
81.00.83.00 Opening	236mm		261mm		171mm	84.75.00.13
81.10.75.00 Fixed	175mm		200mm		120mm	
81.10.81.00 Fixed	198mm		223mm		143mm	
81.10.83.00 Fixed	236mm		261mm		181mm	
Portlights Elliptical:						
81.00.79.00 Opening	510x165mm		535x192mm		445x102mm	84.75.79.00
81.00.76.01 Opening	980x200mm		1005x225mm		855x135mm	84.75.76.01
81.10.79.00 Fixed	510x165mm		535x192mm		455x112mm	



FlushLine Portlights



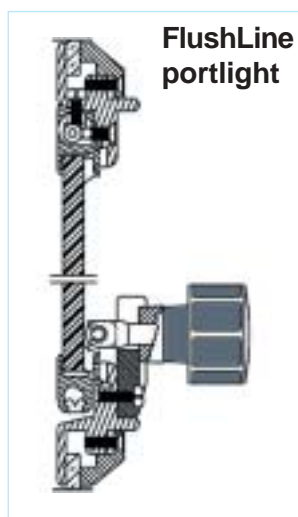
Accessories



FlushLine portlight

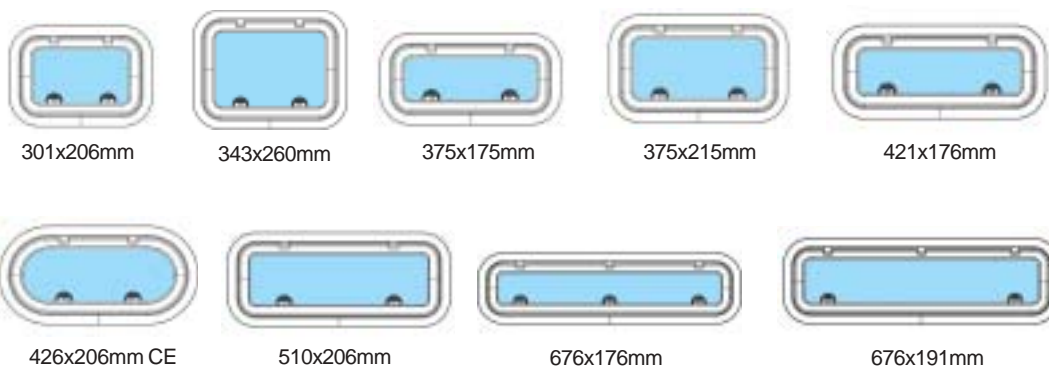


mosquito screen



FlushLine portlight

FlushLine portlights - sizes



CATEGORY:
A + B + C + D
AREA III
See page 37

FlushLine portlights are suitable for wall thicknesses of 9 tot 21mm

Portlights should be fitted to a flat surface with a maximum tolerance of 1mm.

PORTLIGHTS FLUSHLINE - SPECIFICATIONS

Art.No.	Cut-Out size L x B	Radius	Overall size L x B	Radius	Glass - see through	Mosquito screen
81.32.26.00	301x206mm	56	326x231mm	68	221x126mm	84.75.01.02
81.32.35.00	343x260mm	56	368x285mm	68	263x180mm	84.75.01.05
81.32.40.00	375x175mm	56	400x200mm	68	295x95mm	84.75.01.06
81.32.45.00	375x215mm	56	400x240mm	68	295x135mm	84.75.01.07
81.32.50.00	421x176mm	56	446x201mm	68	341x96mm	84.75.01.08
81.32.32.00 Circ.ended	426x206mm	103	451x231mm	115	346x126mm	84.75.01.04
81.32.65.00	510x206mm	56	535x231mm	68	430x126mm	84.75.01.11
81.32.71.00	676x176mm	56	701x201mm	68	596x196mm	84.75.01.14
81.32.70.00	676x191mm	56	701x216mm	68	596x111mm	84.75.01.13





Portlights EconoLine



More quality for your money

GEBO THROUGH AND THROUGH

Those familiar with Gebo standard and FlushLine portlights will recognise immediately the same qualities in the EconoLine range. The same high quality, non-corrosive materials. The same meticulous attention to detail. The same easy-installation design. And the same wide choice of colours and finishes.

MORE QUALITY FOR YOUR MONEY

Compare a Gebo EconoLine portlight to other commonly specified portlights of a similar price, and you'll notice distinct differences. For example, the EconoLine portlight lid is formed not out of 6mm or 8mm acrylic, but of ultra-tough 10mm acrylic. Multi-position Gebo stepless hinges are used in order to provide maximum flexibility for the user.

LESS FUSS FOR INSTALLERS

Whereas some comparable portlights come in kit form, with many pieces to install and fiddly trims to cut to size, EconoLine portlights feature the Gebo unique clamp system for the fastest, neatest finish.

The EconoLine design is being recommended for building in the deck, coachroof, cockpit and transom. For applications in the hull please see our standard (rectangular and circular ended) portlights.

Each EconoLine portlight is supplied with an aperture template to aid fitting. Our unique clamp system eliminates the need for hole drilling. For a perfect fit you simply screw the inner rim onto the back of the outer frame from the inside

Gebo clamp system EconoLine portlights are suitable for wall thicknesses of 4 to 20mm

CATEGORIE:
A + B + C + D
AREA II
 See page 37

Accessories



Portlight EconoLine



EconoLine, mosquito screen and rainshield



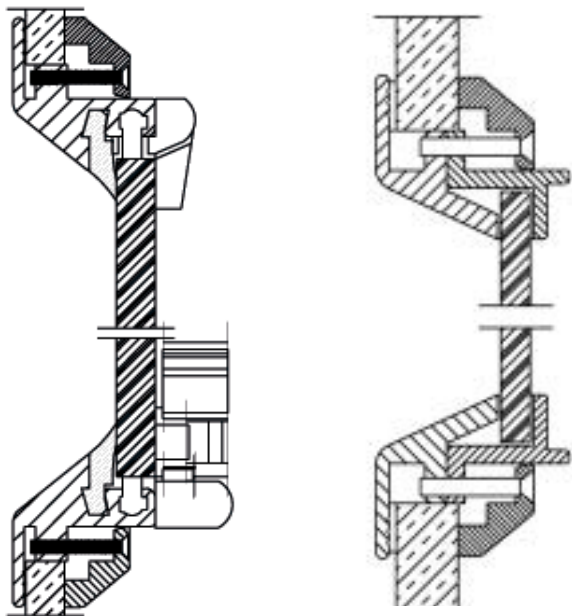


■ *Labour saving design for superstructure fitting.*



■ *Multiposition friction hinges for easier opening.*

Profile EconoLine portlights

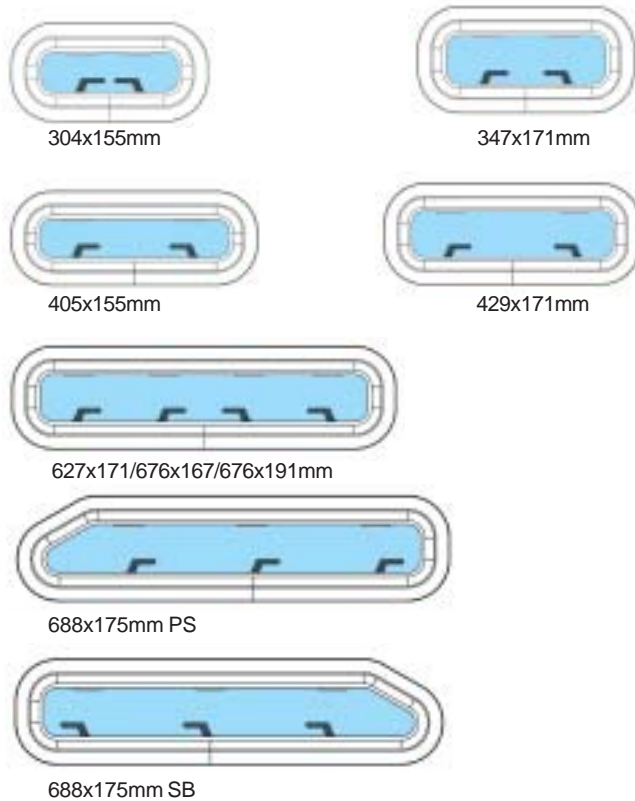


Opening

Fixed

Gebo clamp system EconoLine portlights are suitable for wall thicknesses of 4 to 20 mm.

Portlights, EconoLine - sizes



Portlights should be fitted to a flat surface with a maximum tolerance of 1 mm.

PORTLIGHTS ECONOLINE - SPECIFICATIONS

Art.No.	Cut-out size L x B	Radius	Overall size L x B	Radius	Glass - see through	Mosquito screen	Rainshield
81.70.00.00 Opening	304x155mm	56	329x180mm	68	227x78mm	84.75.00.50	
81.70.00.05 Opening	347x171mm	56	372x196mm	68	270x94mm	84.75.00.52	84.85.00.52
81.70.00.10 Opening	405x155mm	56	430x180mm	68	328x78mm	84.75.00.53	
81.70.00.15 Opening	429x171mm	56	454x196mm	68	352x94mm	84.75.00.54	
81.70.00.20 Opening	627x171mm	56	652x196mm	68	550x94mm	84.75.00.55	
81.70.01.00 Opening	676x167mm	56	701x192mm	68	599x90mm	84.75.00.56	
81.70.01.01 Opening	676x191mm	56	701x216mm	68	599x114mm	84.75.00.57	
81.70.00.25 Opening PS	688x175mm	56	713x200mm	68	611x98mm		
81.70.00.30 Opening SB	688x175mm	56	713x200mm	68	611x98mm		
81.71.00.00 Fixed	304x155mm	56	329x180mm	68	240x91mm		
81.71.00.05 Fixed	347x171mm	56	372x196mm	68	283x107mm		
81.71.00.10 Fixed	405x155mm	56	430x180mm	68	341x95mm		
81.71.00.15 Fixed	429x171mm	56	454x196mm	68	365x107mm		
81.71.00.20 Fixed	627x171mm	56	652x196mm	68	563x107mm		
81.71.00.25 Fixed PS	688x175mm	56	713x200mm	68	624x111mm		
81.71.00.30 Fixed SB	688x175mm	56	713x200mm	68	624x111mm		



Air suction ventilators (0,74 kW/=1 HP)



The GEBO Air Suction Ventilators are the perfect blend of form and function.

UNIQUE AIR-POWERED DESIGN

This unique Gebo-developed design provides efficient engine compartment air management through a

powerful air suction unit that requires no power source whatsoever other than the air movement outside of the boat. There are no fans, no motors, and virtually no maintenance. When the craft is in motion, the unit simply extracts air from the engine compartment and replaces it with fresh air from outside the craft.

CHOICE OF TWO FITTING SYSTEMS

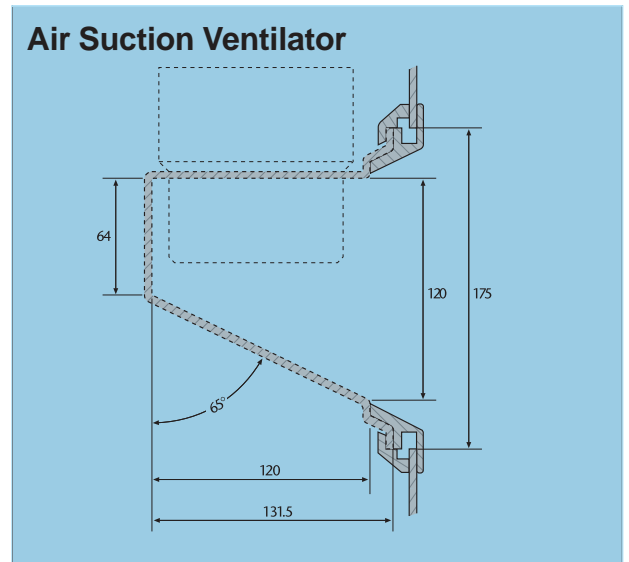
Two different systems are available: with inner rim for a fast, neat finish using the unique Gebo, labour-saving clamp system, or for screwing directly to the hull without inner rim.

CLEAN AIR AND CLEAN LINES TOO

To preserve the clean lines of your design, Gebo Air Suction Ventilators are manufactured in exactly the same style and extrusions, and in the same wide choice of frame colours and finishes, as Gebo portlights.

KEEPS WATER OUT

A special dorade box system, supplied as standard, ensures that any water that collects within the air suction mechanism can be directed out of the unit to the outside of the boat.



The powder coated version featured soldered joints for a smooth, high-quality, appearance.

Air suction ventilator - sizes



375x175mm

37kW/50HP



600x175mm circular ended

74kW/100HP

Air suction ventilators should be fitted to a flat surface with a maximum tolerance of 1 mm.

AIR SUCTION VENTILATORS - SPECIFICATIONS

Description	Clamp system	Visibly screwed	kW/HP	RAL	Cut-out size	Radius	Overall size	Radius
blanc anodised	81.60.00.01		37/ 50		375x175mm	56	400x200mm	68
white coated	81.60.00.07		37/ 50	9010	375x175mm	56	400x200mm	68
black coated	81.60.00.08		37/50	9005	375x175mm	56	400x200mm	68
blanc anodised C. ended	81.60.50.00	81.60.02.00	74/100		600x175mm	88	625x200mm	100
white coated C. ended	81.60.51.00	81.60.01.00	74/100	9010	600x175mm	88	625x200mm	100
black coated C. ended	81.60.53.00	81.60.03.00	74/100	9005	600x175mm	88	625x200mm	100

How to measure sizes

Portlights:

Take the following into account:

- Will the portlight open inward or outward?
- Is the portlight shape rectangular or circular ended?
- What is the total outside measurement?
- Portlights should be fitted to a flat surface with a maximum tolerance of 1mm over the length.

The cut out size is the total outside size minus 24mm. Rainshield and flyscreens are available for the portlights. They are listed according to cut out size.

Hatches:

Take the following into account:

- Hatches should be fitted to a flat surface with a maximum tolerance of 1mm.
- Take measurements of the cut out size in the deck.
- Will you have wood trim on the inside or not?
- When wood is not required on the inside, you may use a hatch with a flange.
- When you do require a wood trim on the inside or are replacing an existing (Gebo) flatbase hatch, we recommend a hatch without a flange.
- What is the radius of the corners?
- Flushline Hatches with a flange always have a corner radius 42

